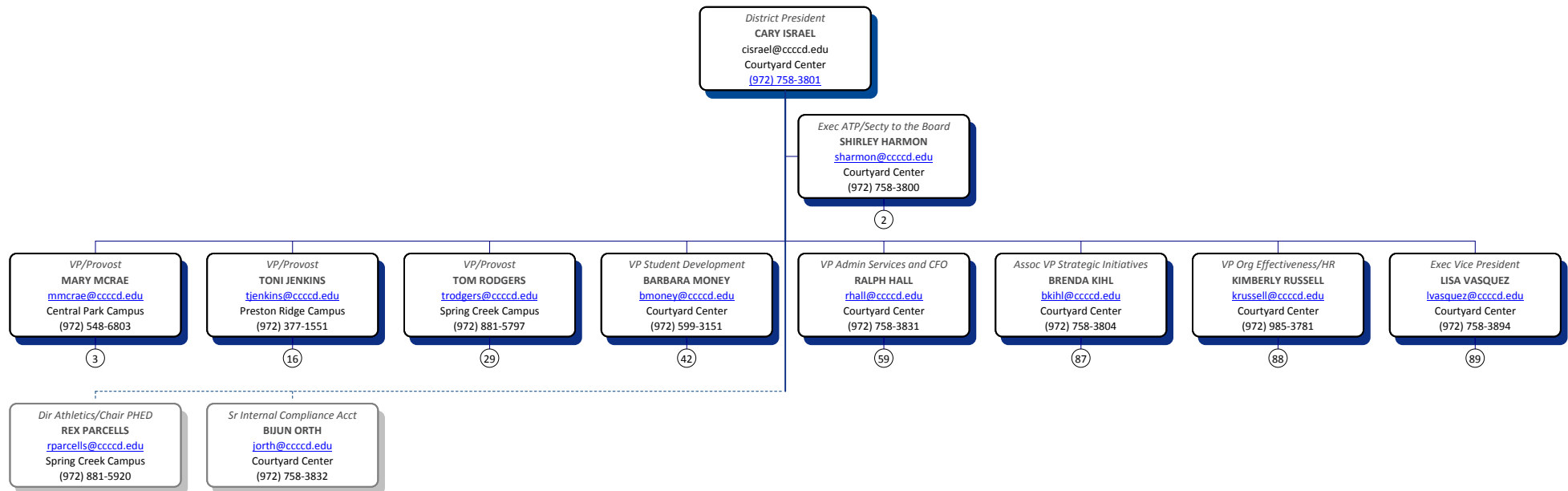




## ORGANIZATION CHART





# PRESIDENTS OFFICE

1

*Exec ATP/Secty to the Board*

**SHIRLEY HARMON**

[sharmon@cccd.edu](mailto:sharmon@cccd.edu)

Courtyard Center

(972) 758-3800

*Dist Facilities Sched Coord*

**KAREN KNAPP**

[kknapp@cccd.edu](mailto:kknapp@cccd.edu)

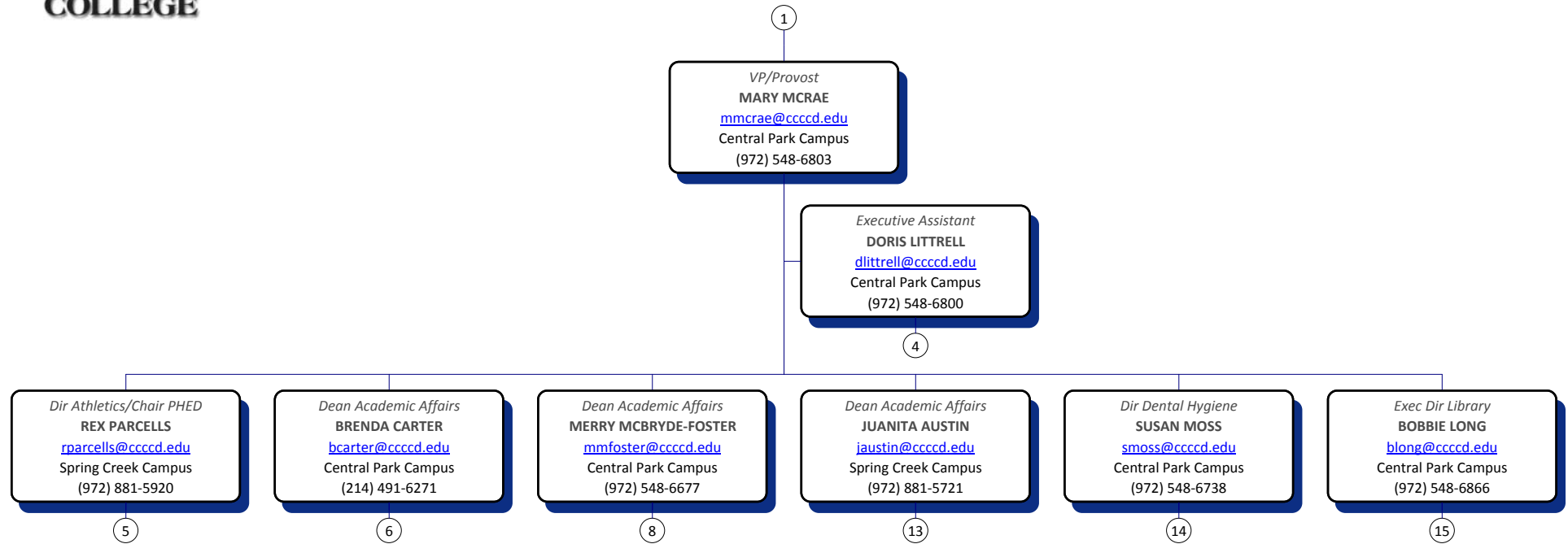
Spring Creek Campus

(972) 881-5606

2



## VICE PRESIDENT & PROVOST



# VICE PRESIDENT & PROVOST



3

*Executive Assistant*  
**DORIS LITRELL**  
[dlittrell@cccdd.edu](mailto:dlittrell@cccdd.edu)  
Central Park Campus  
(972) 548-6800

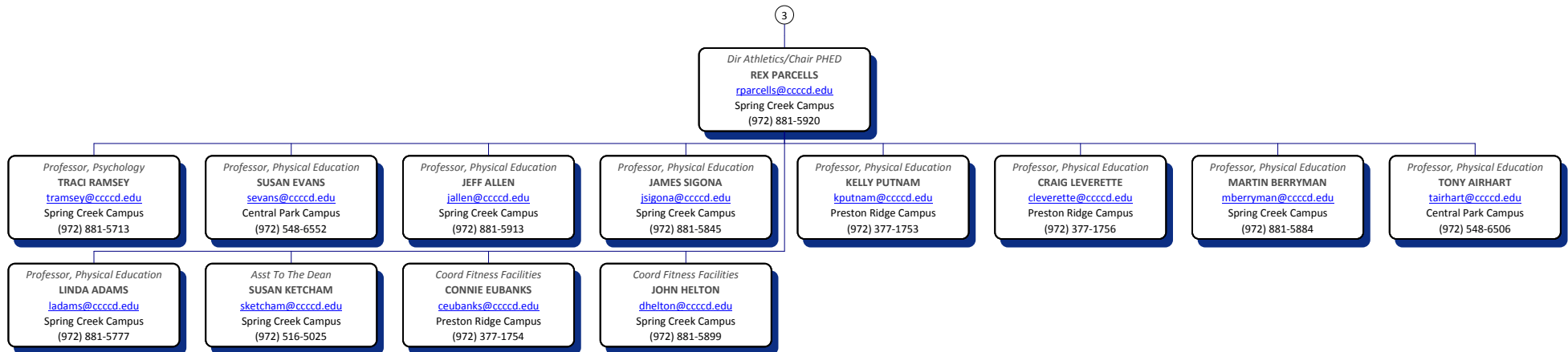
*Division Secretary*  
**WILMA ECKHOFF**  
[weckhoff@cccdd.edu](mailto:weckhoff@cccdd.edu)  
Central Park Campus  
(972) 548-6830

*Division Secretary*  
**PAULA BALLEW**  
[pballew@cccdd.edu](mailto:pballew@cccdd.edu)  
Central Park Campus  
(972) 548-6832

*Information Ctr Asst - CPC*  
**BILLIE WILLOUGHBY**  
[mwilloughby@cccdd.edu](mailto:mwilloughby@cccdd.edu)  
Central Park Campus  
(972) 548-6790

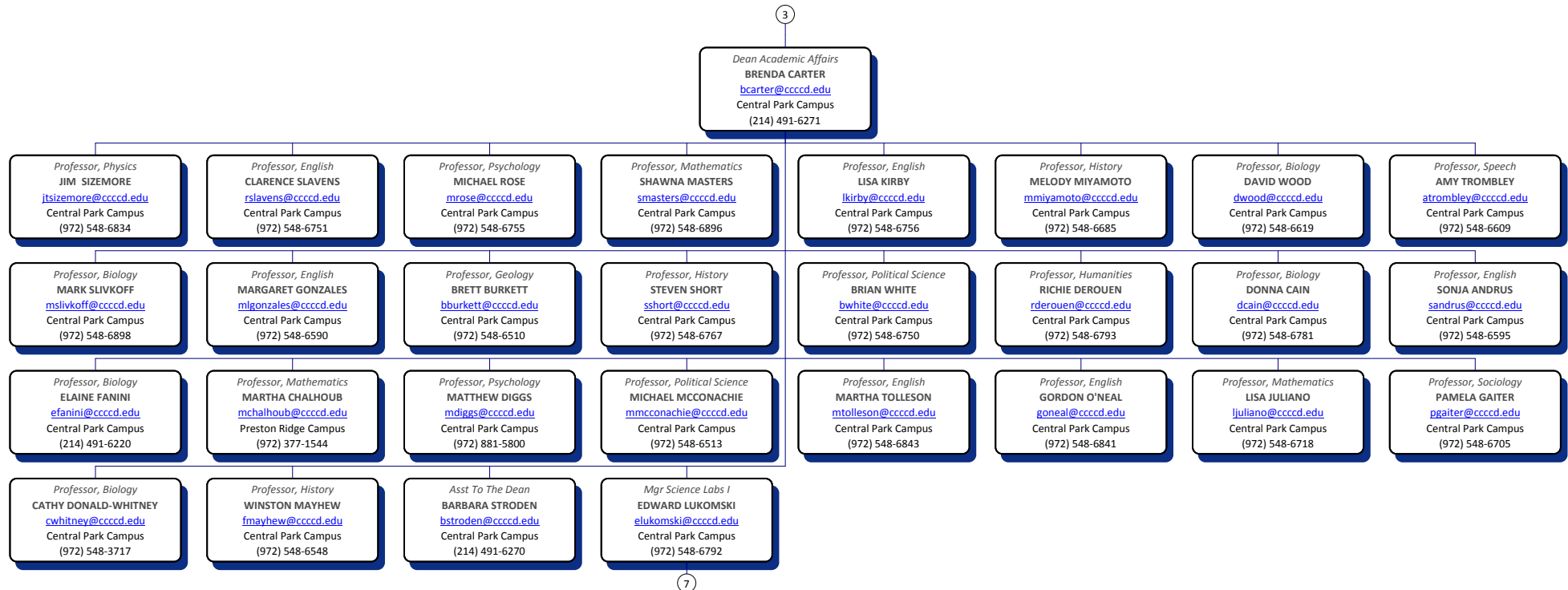


## PHYSICAL EDUCATION



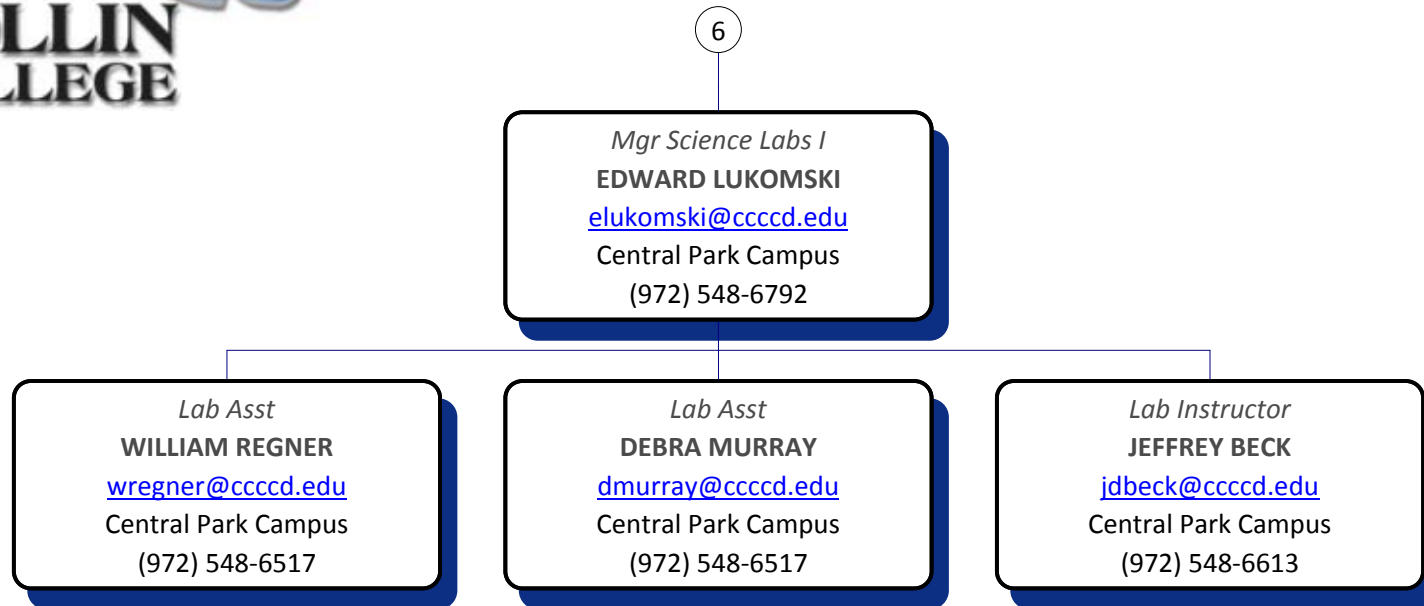


## ACADEMIC AFFAIRS



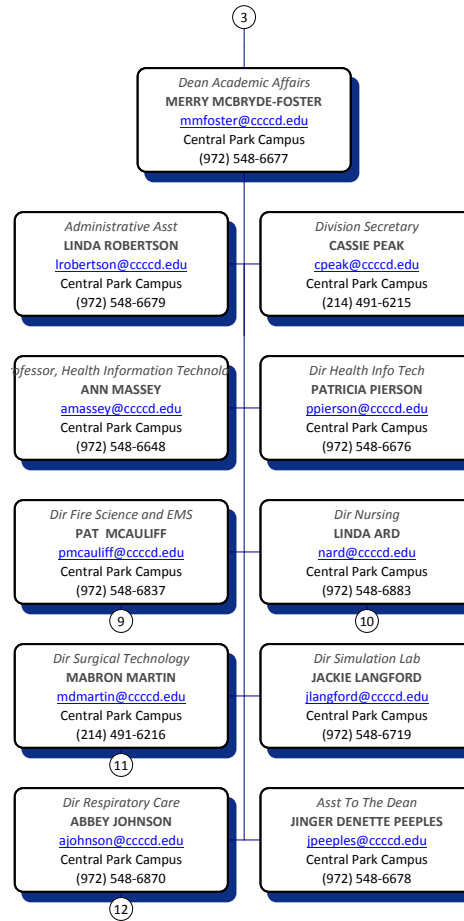


# ACADEMIC AFFAIRS

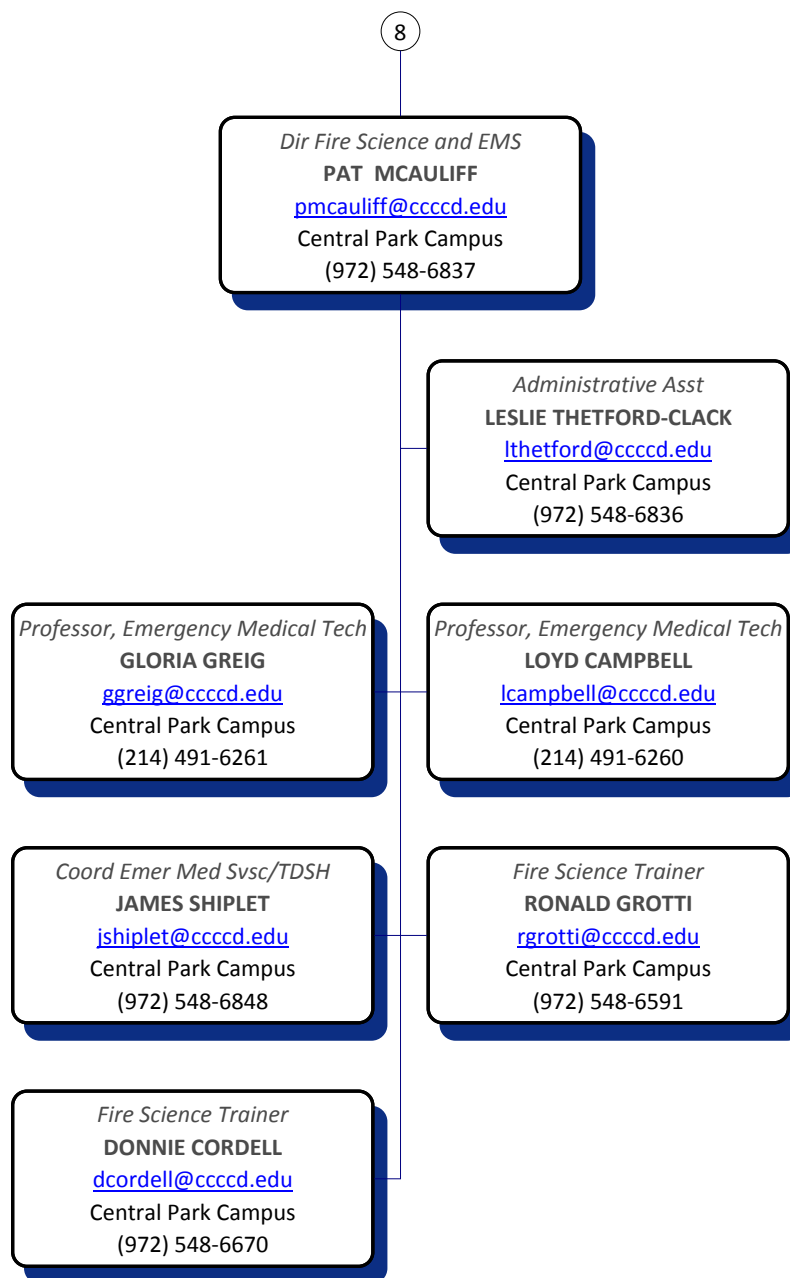




## HEALTH SCIENCE-EMERG SVC

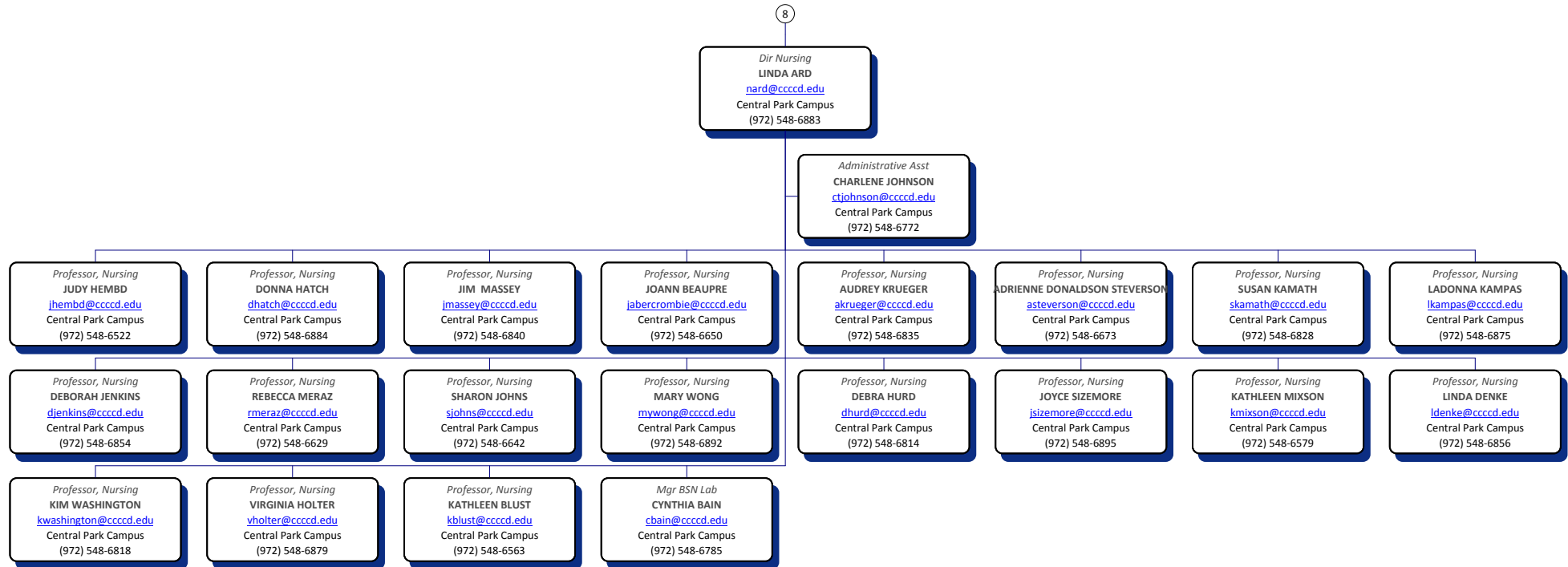


# HEALTH SCIENCE-EMERG SVC





## HEALTH SCIENCE-EMERG SVC





# HEALTH SCIENCE-EMERG SVC

8

*Dir Surgical Technology*

**MABRON MARTIN**

[mdmartin@cccd.edu](mailto:mdmartin@cccd.edu)

Central Park Campus

(214) 491-6216

*Professor, Surgical*

**JEANNE GLAPION**

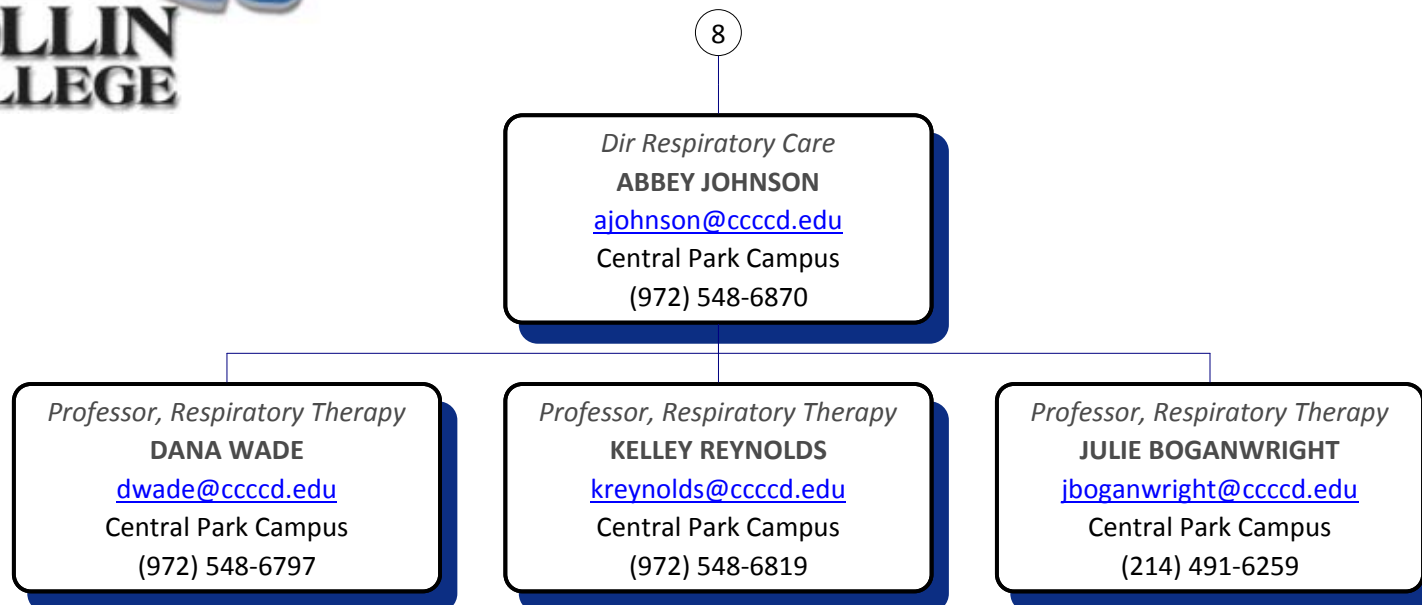
[jglapion@cccd.edu](mailto:jglapion@cccd.edu)

Central Park Campus

(214) 491-6218

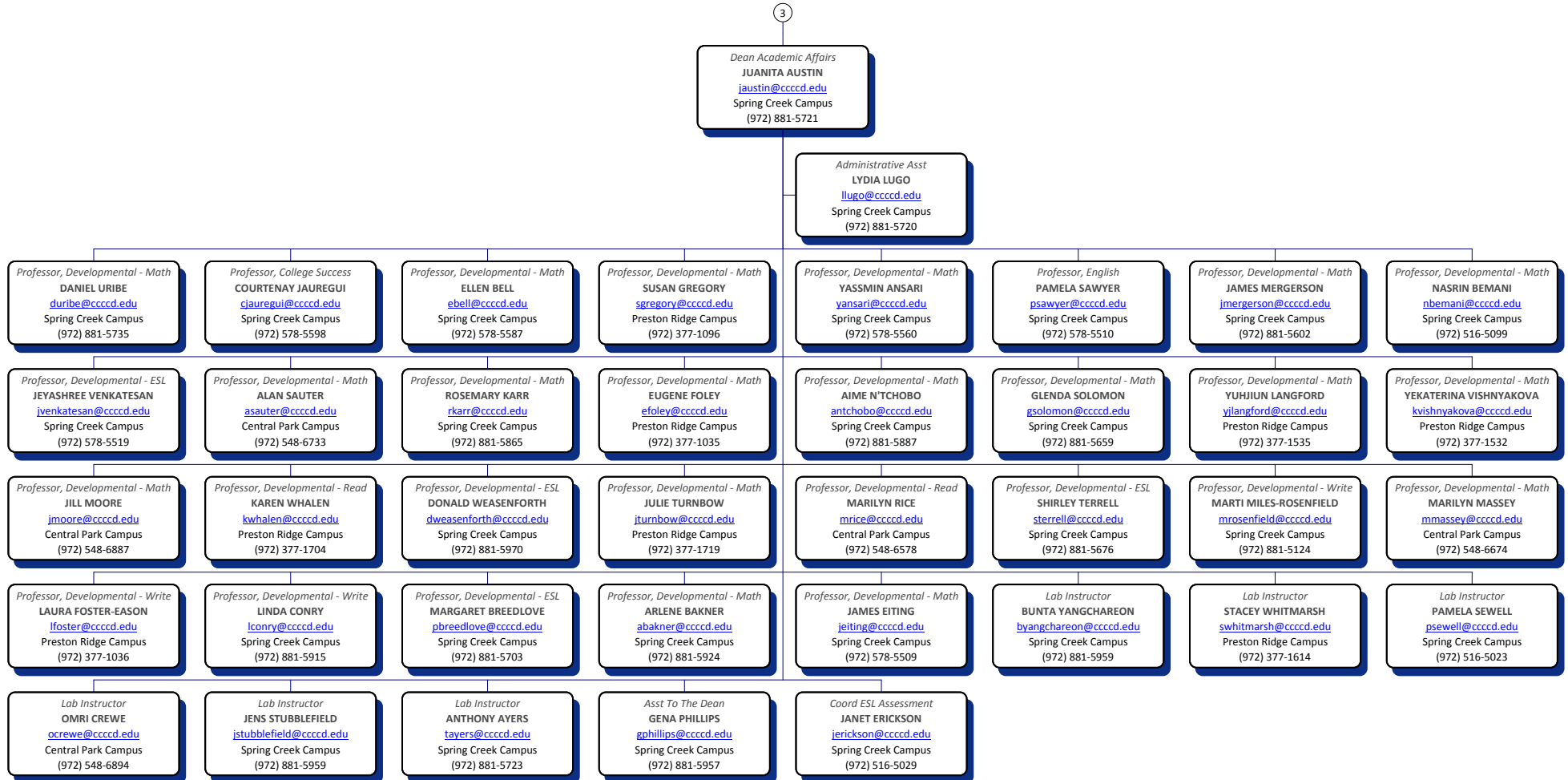


# HEALTH SCIENCE-EMERG SVC

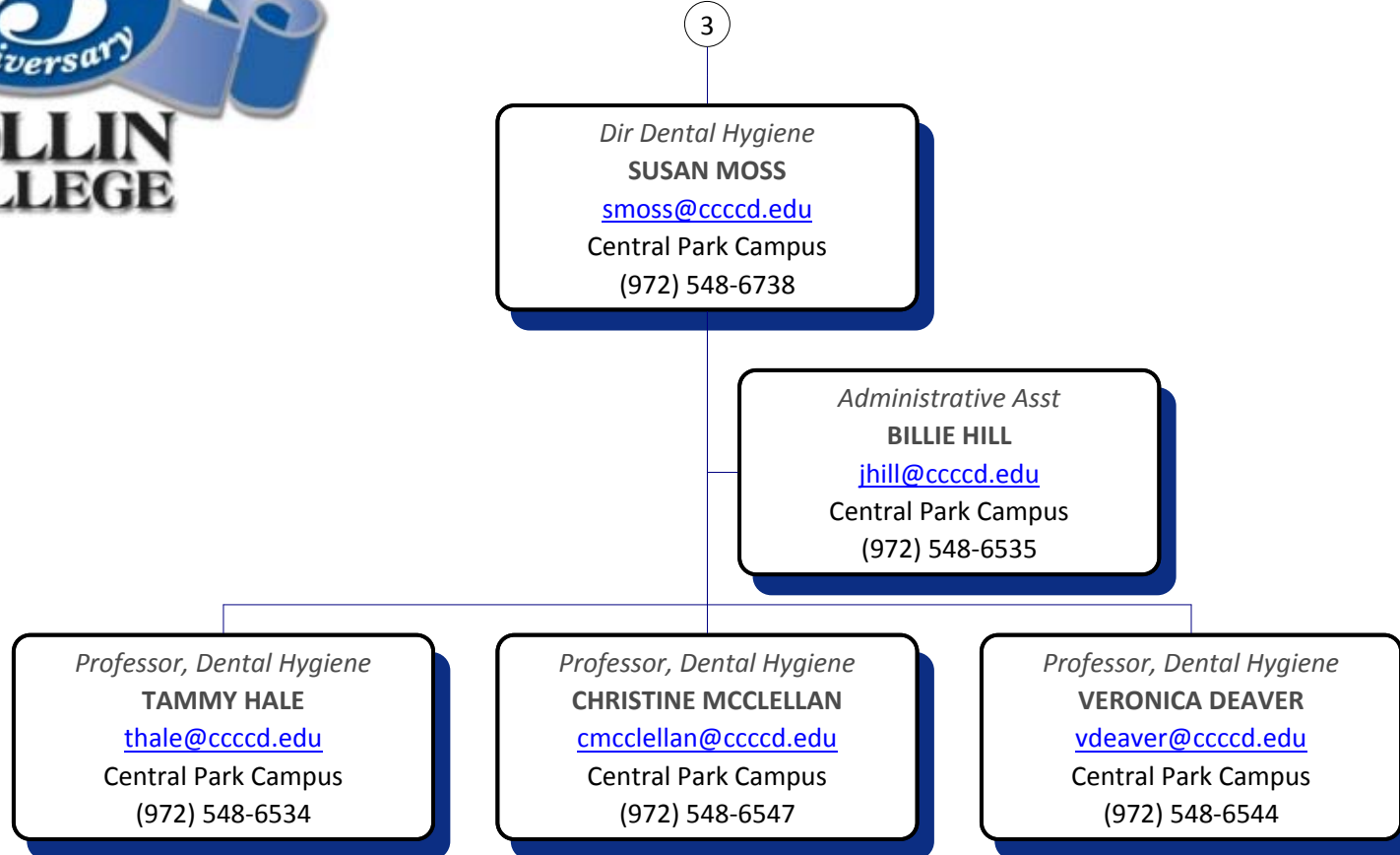




# DEVELOPMENTAL EDUCATION

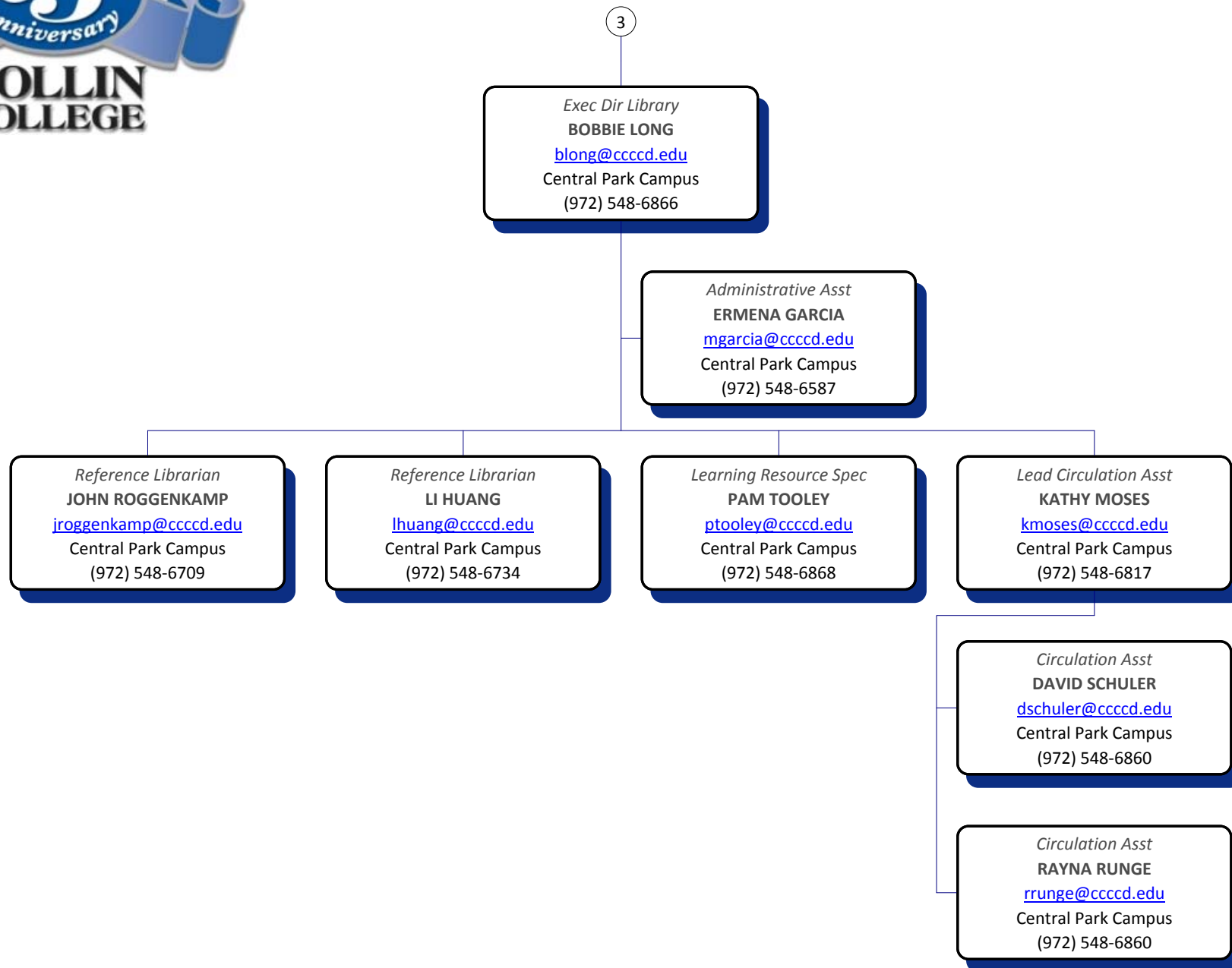


# HEALTH SCIENCE-EMERG SVC

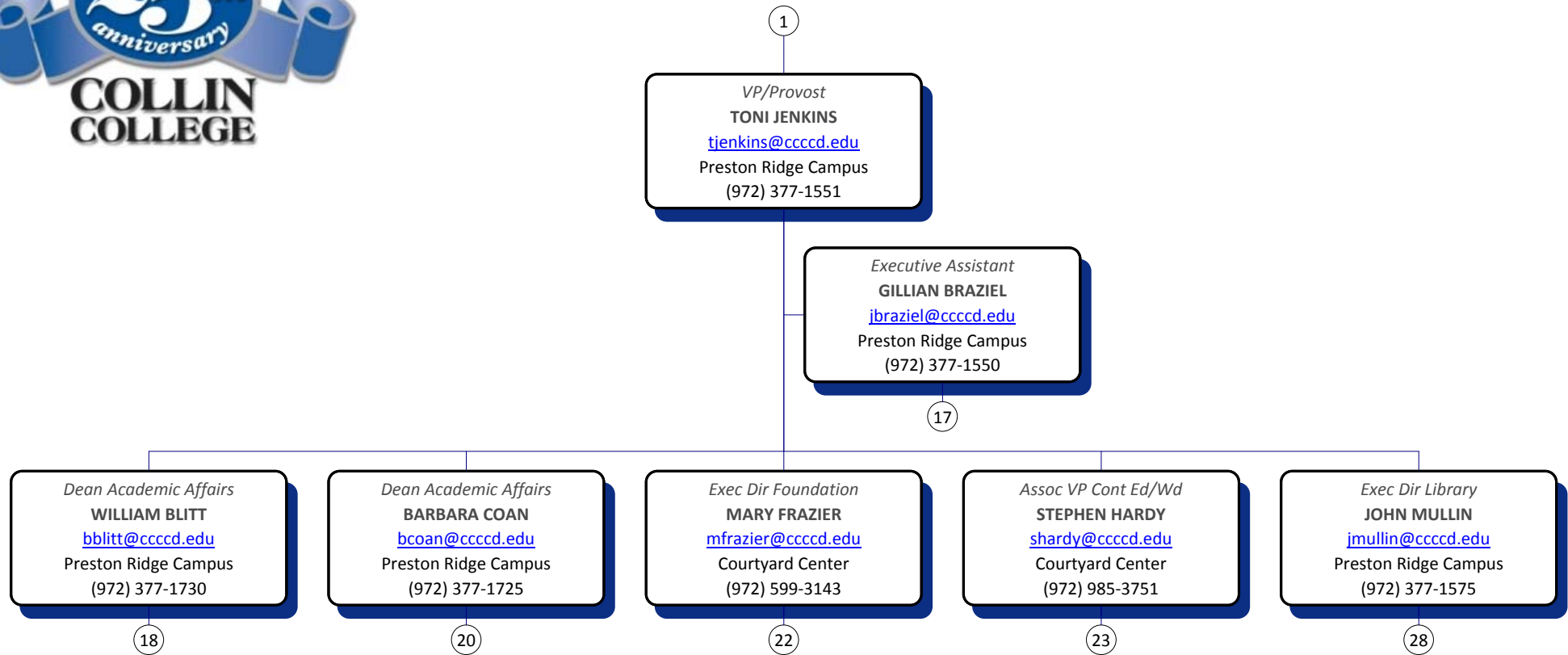




# LIBRARY



# VICE PRESIDENT & PROVOST





# VICE PRESIDENT & PROVOST

16

*Executive Assistant*  
**GILLIAN BRAZIEL**  
[jbraziel@cccd.edu](mailto:jbraziel@cccd.edu)  
 Preston Ridge Campus  
 (972) 377-1550

*Secretary I*  
**KATHLEEN CLARY**  
[kclary@cccd.edu](mailto:kclary@cccd.edu)  
 Preston Ridge Campus  
 (972) 377-1554

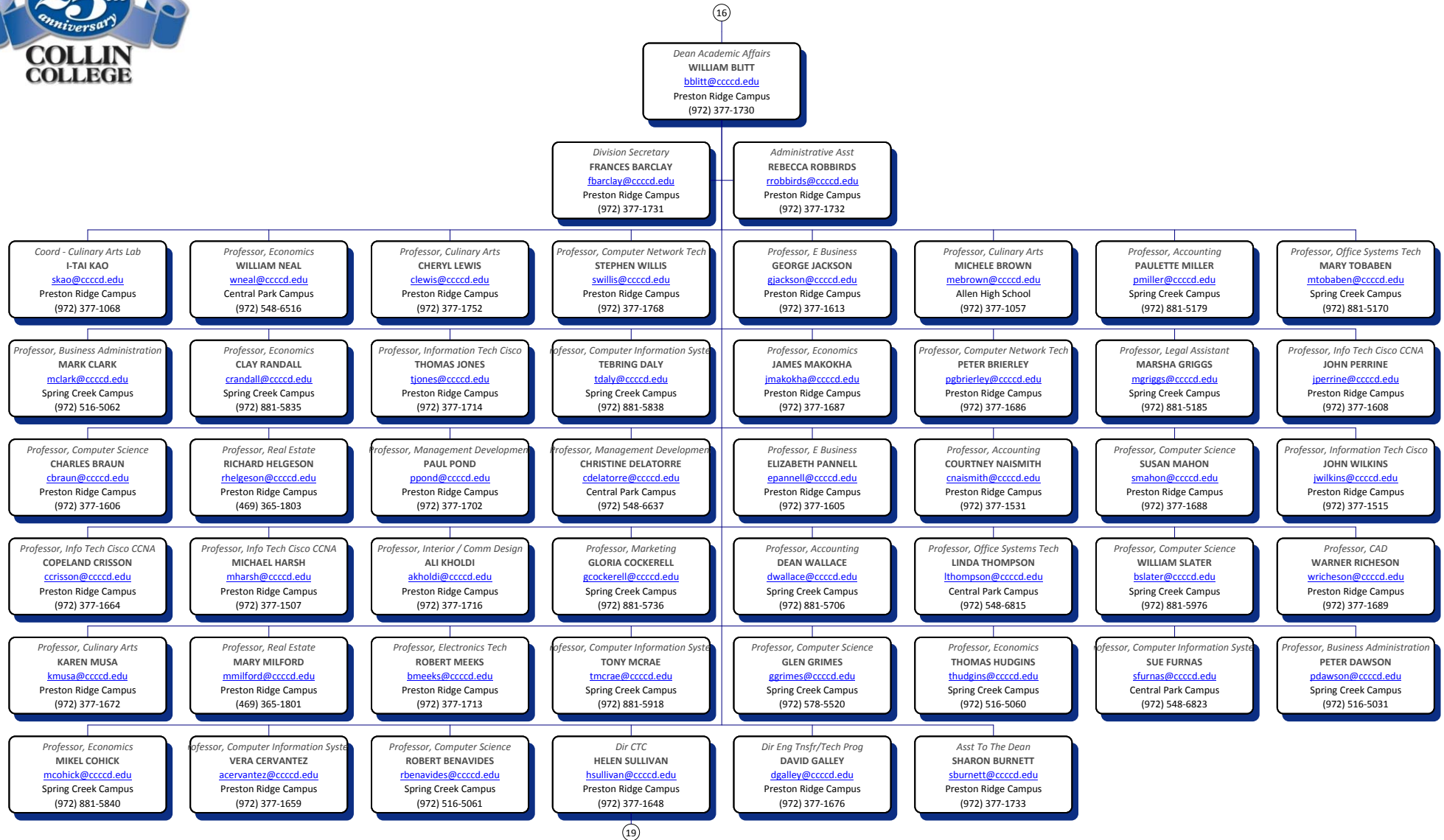
*Secretary I*  
**KIMBERLY COSTELLO**  
[kcostello@cccd.edu](mailto:kcostello@cccd.edu)  
 Preston Ridge Campus  
 (972) 377-1506

*Division Secretary*  
**MARY GIBBONS**  
[mjgibbons@cccd.edu](mailto:mjgibbons@cccd.edu)  
 Preston Ridge Campus  
 (972) 377-1585

*Information Ctr Asst - PRC*  
**DONNA DAY**  
[djday@cccd.edu](mailto:djday@cccd.edu)  
 Preston Ridge Campus  
 (972) 377-1790



# BUS, INFO & ENG TECH





# BUS, INFO & ENG TECH

18

*Dir CTC*

**HELEN SULLIVAN**

[hsullivan@cccd.edu](mailto:hsullivan@cccd.edu)

Preston Ridge Campus  
(972) 377-1648

*Program Mgr CTC*

**ANN BLACKMAN**

[ablackman@cccd.edu](mailto:ablackman@cccd.edu)

Preston Ridge Campus  
(972) 377-1582



## ACADEMIC AFFAIRS

16

Dean Academic Affairs  
BARBARA COAN  
[bcoan@ccccd.edu](mailto:bcoan@ccccd.edu)  
Preston Ridge Campus  
(972) 377-1725

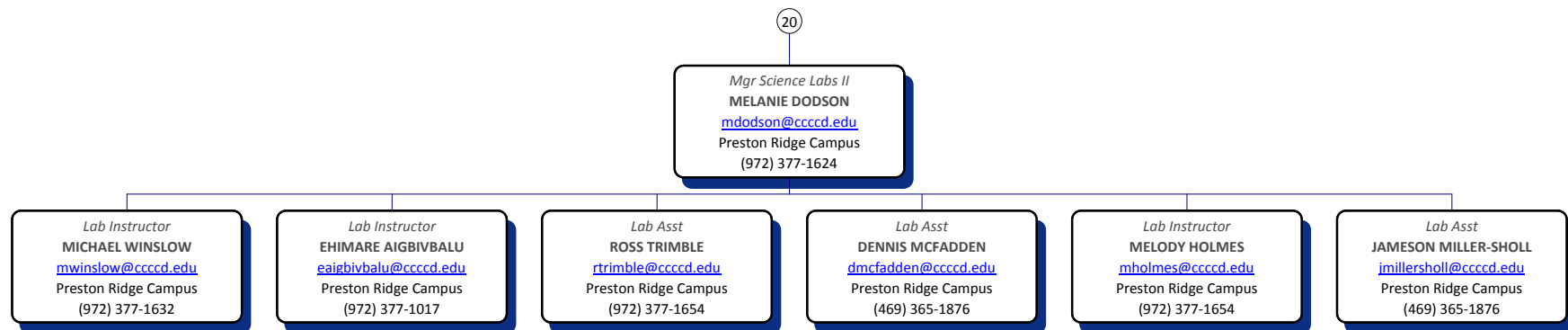
Administrative Asst  
LAURIE TONIAN  
[ltonian@ccccd.edu](mailto:ltonian@ccccd.edu)  
Preston Ridge Campus  
(972) 377-1006



21



## ACADEMIC AFFAIRS





# FOUNDATION

16

*Exec Dir Foundation*

**MARY FRAZIER**

[mfrazier@cccd.edu](mailto:mfrazier@cccd.edu)

Courtyard Center

(972) 599-3143

*Development Officer*

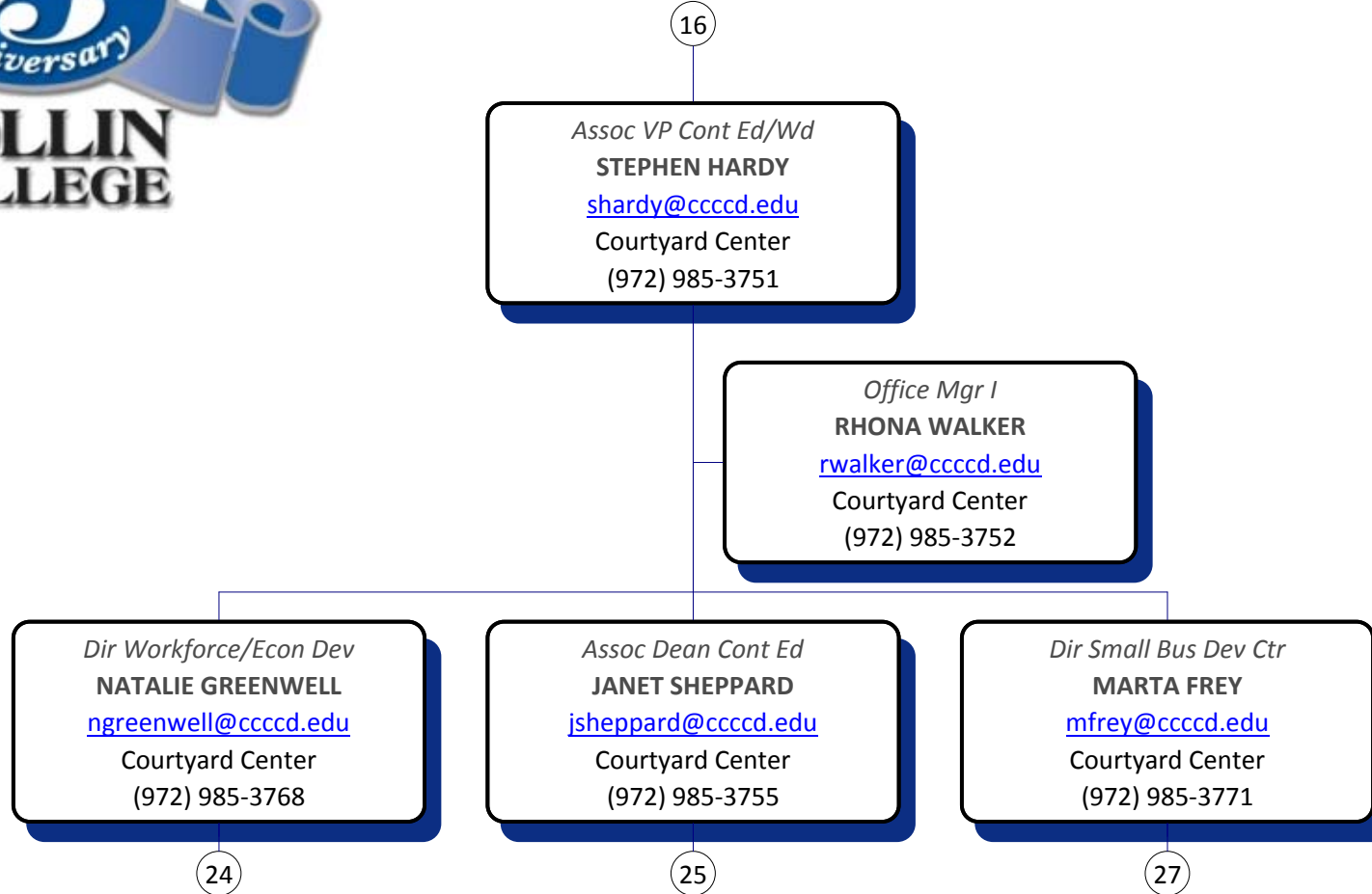
**MARGARET YATES**

[myates@cccd.edu](mailto:myates@cccd.edu)

Courtyard Center

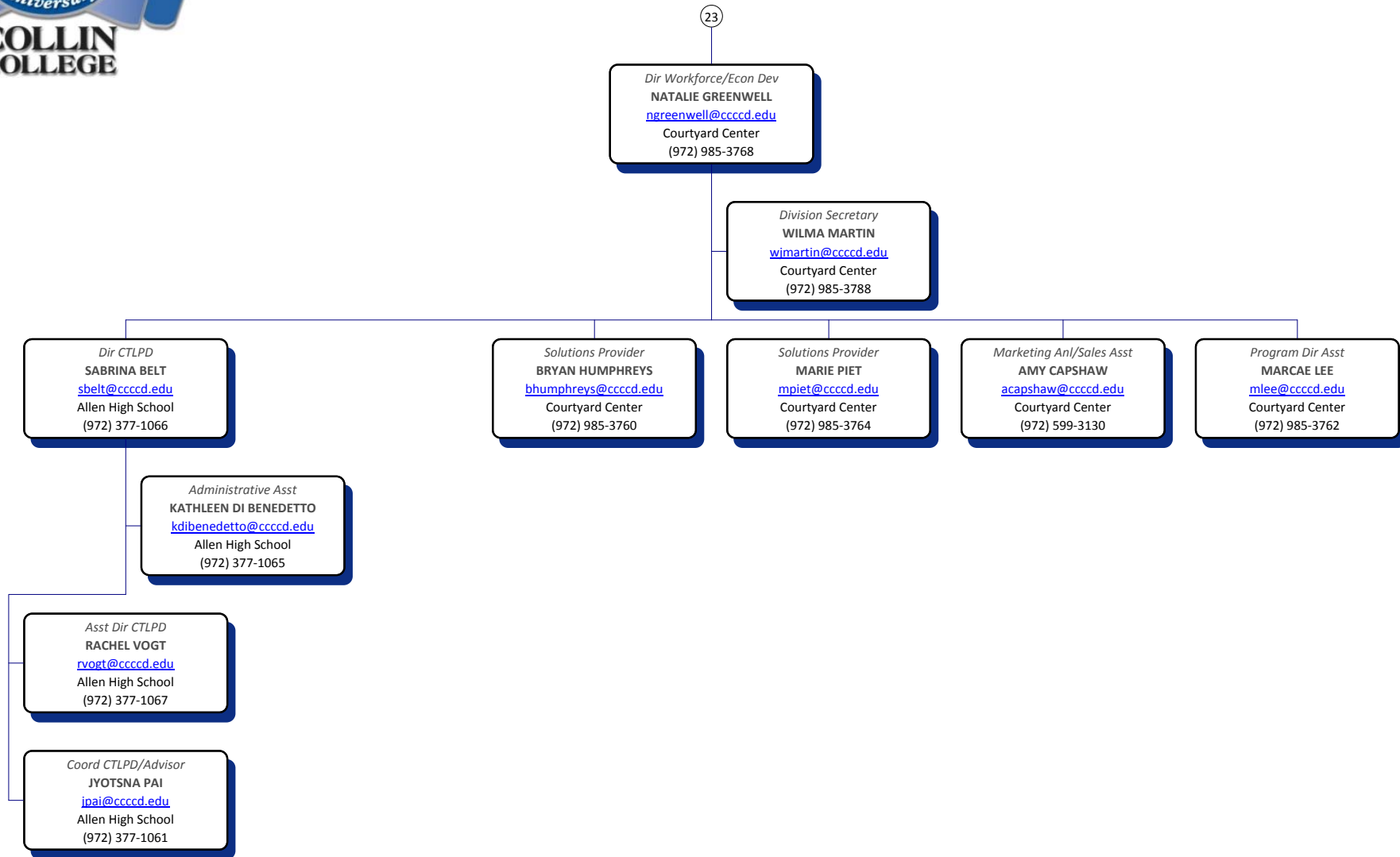
(972) 599-3144

# CONT ED & WORKFORCE DEV



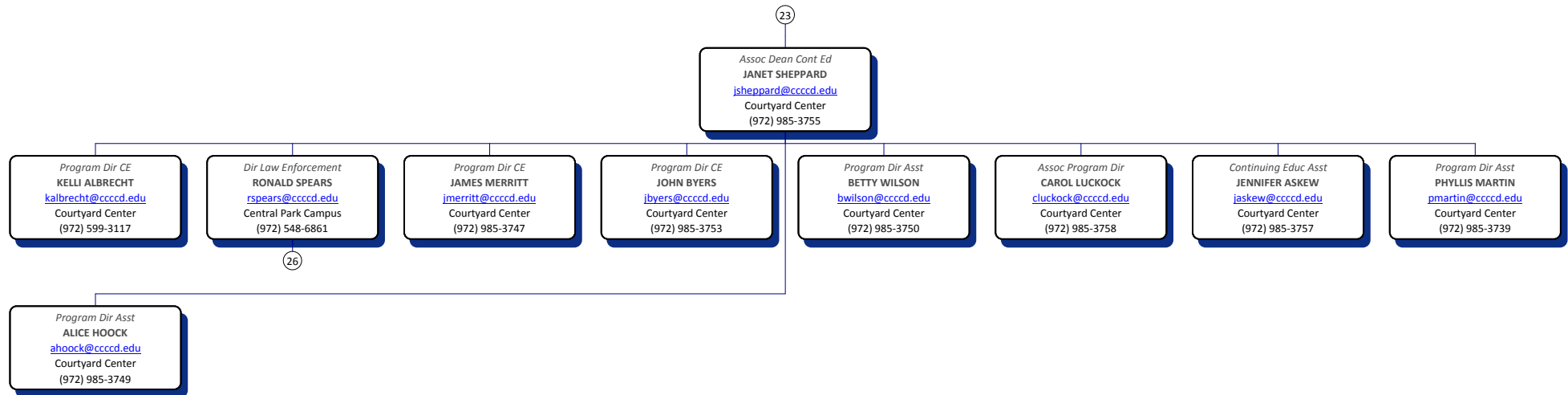


# CONT ED & WORKFORCE DEV

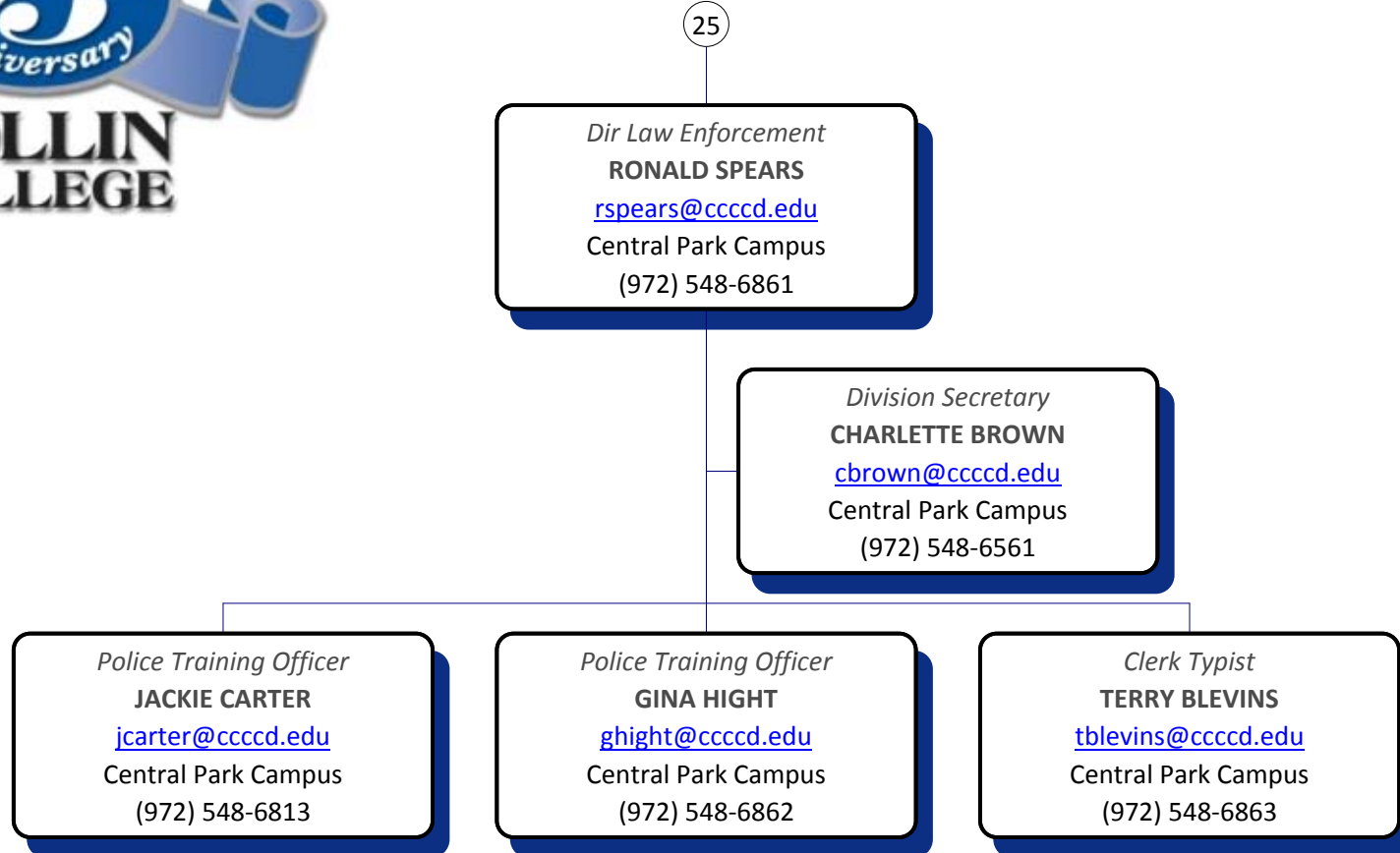




## CONT ED & WORKFORCE DEV



# LAW ENFORCEMENT



# CONT ED & WORKFORCE DEV



23

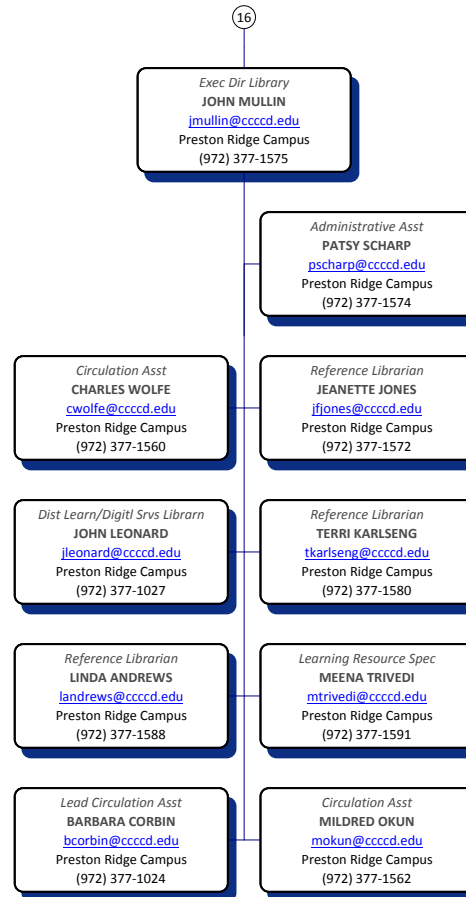
*Dir Small Bus Dev Ctr*  
**MARTA FREY**  
[mfrey@cccd.edu](mailto:mfrey@cccd.edu)  
Courtyard Center  
(972) 985-3771

*Division Secretary*  
**GLORIA DANIEL**  
[gdaniel@cccd.edu](mailto:gdaniel@cccd.edu)  
Courtyard Center  
(972) 985-3770

*SBDC Assistant*  
**JENNIFER SPARA**  
[jspara@cccd.edu](mailto:jspara@cccd.edu)  
Courtyard Center  
(972) 985-3773

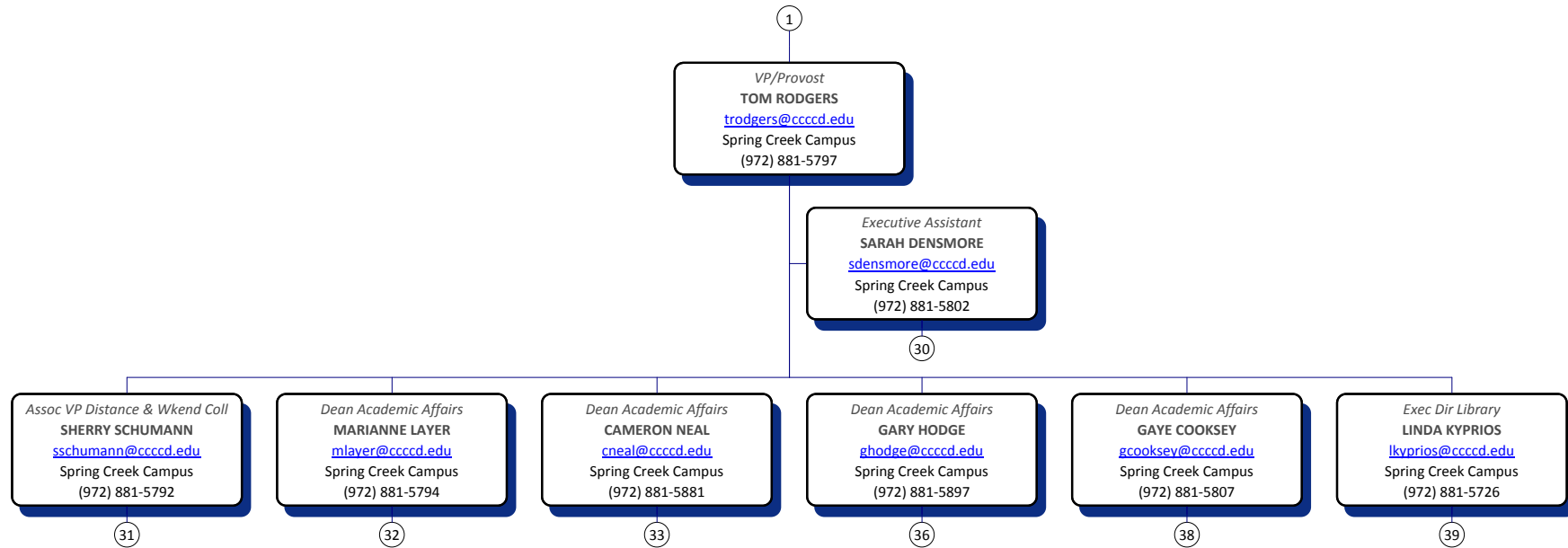


## LIBRARY





## VICE PRESIDENT & PROVOST





# VICE PRESIDENT & PROVOST

29

*Executive Assistant*  
**SARAH DENSMORE**  
[sdensmore@ccc.edu](mailto:sdensmore@ccc.edu)  
 Spring Creek Campus  
 (972) 881-5802

*Information Ctr Asst - SCC*  
**JENNIFER LUNA**  
[jluna@ccc.edu](mailto:jluna@ccc.edu)  
 Spring Creek Campus  
 (972) 881-5790

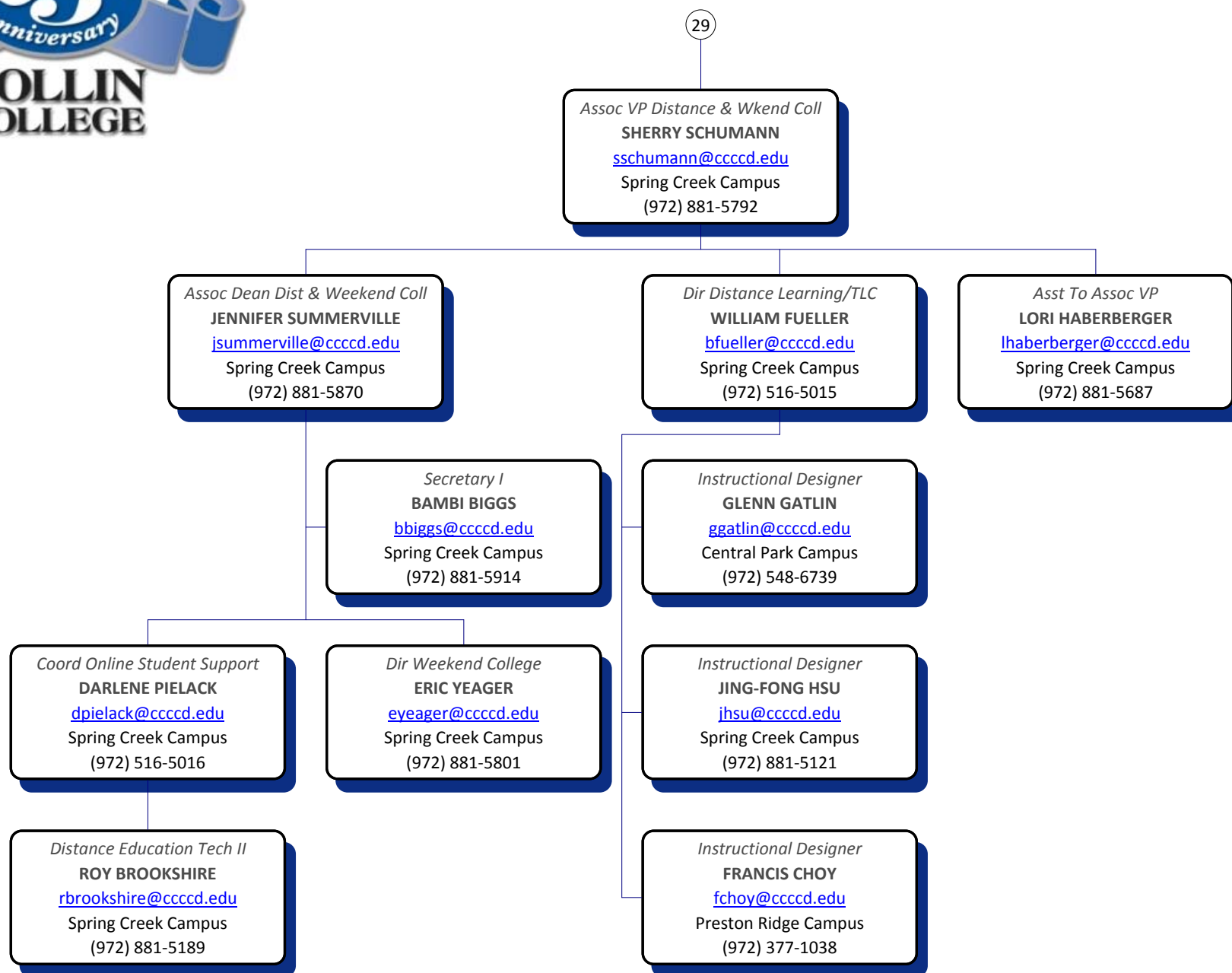
*Secretary I*  
**CAROL WHITE**  
[cwhite@ccc.edu](mailto:cwhite@ccc.edu)  
 Spring Creek Campus  
 (972) 516-5090

*Information Ctr Asst - SCC*  
**KYLE THOMPSON**  
[kwthompson@ccc.edu](mailto:kwthompson@ccc.edu)  
 Spring Creek Campus  
 (972) 881-5790

*Secretary I*  
**REBECCA HARGETT**  
[bhargett@ccc.edu](mailto:bhargett@ccc.edu)  
 Spring Creek Campus  
 (972) 881-5759

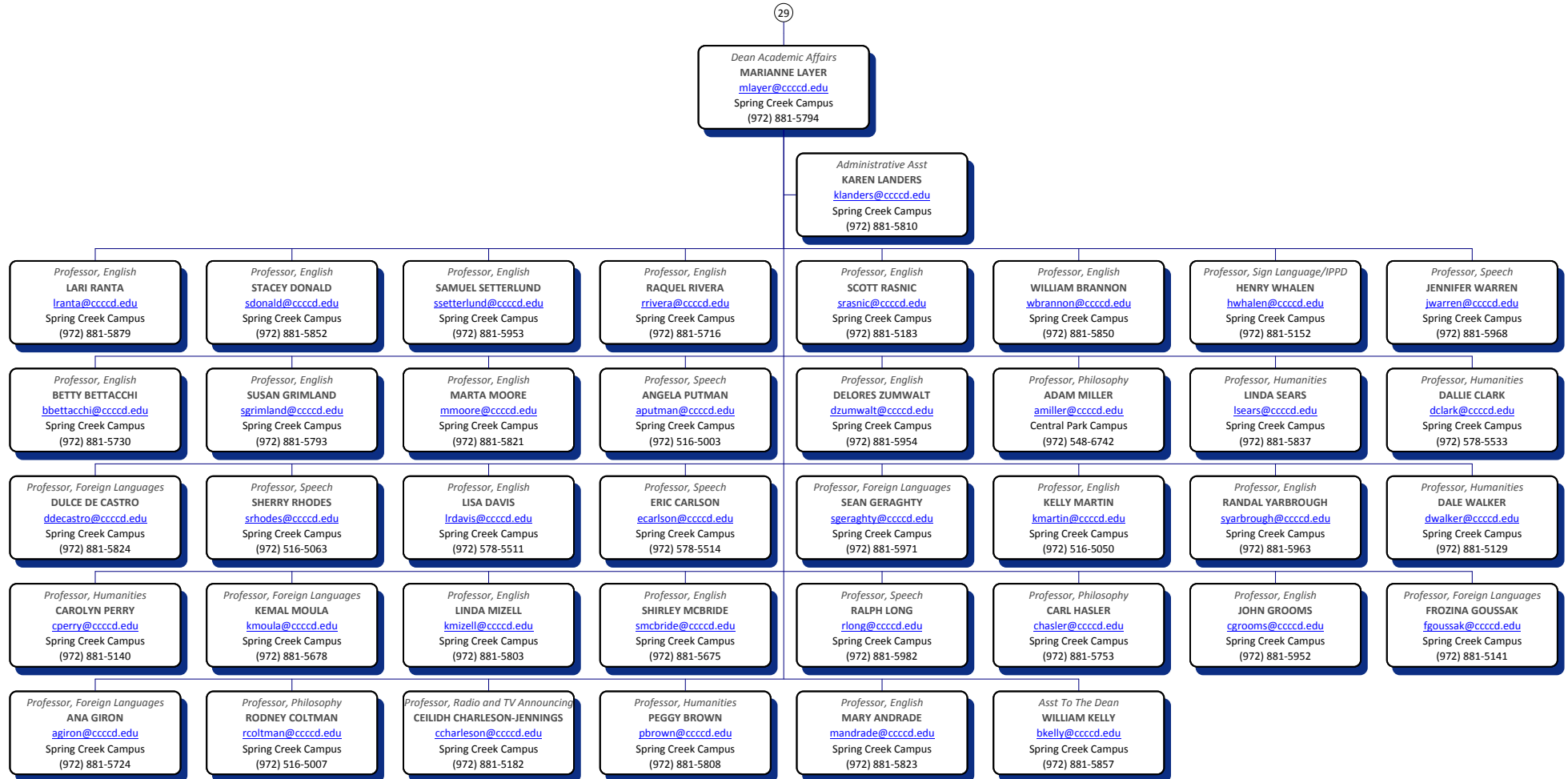


# DISTANCE & WEEKEND COLL



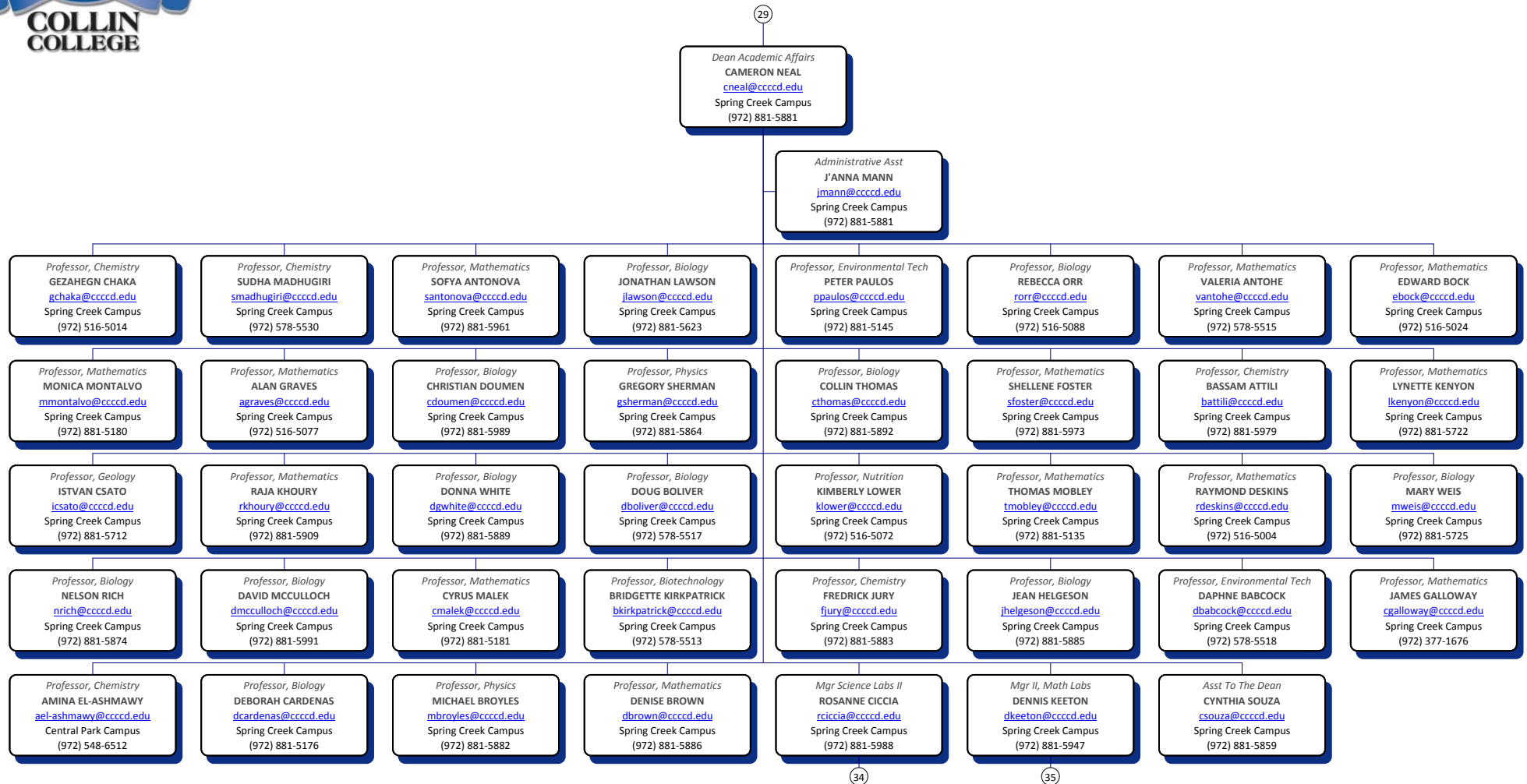


## COMMUNICATIONS-HUMANITIES





# MATH & NATURAL SCIENCES



# MATH & NATURAL SCIENCES



33

*Mgr Science Labs II*  
**ROSANNE CICCIA**  
[rciccia@cccdd.edu](mailto:rciccia@cccdd.edu)  
 Spring Creek Campus  
 (972) 881-5988

*Lab Instructor*  
**SCOTT BROWN**  
[jsbrown@cccdd.edu](mailto:jsbrown@cccdd.edu)  
 Spring Creek Campus  
 (972) 881-5894

*Lab Instructor*  
**GEOFFREY USSERY**  
[gussery@cccdd.edu](mailto:gussery@cccdd.edu)  
 Spring Creek Campus  
 (972) 881-5894

*Lab Asst*  
**ELIZABETH STEINMETZ**  
[esteinmetz@cccdd.edu](mailto:esteinmetz@cccdd.edu)  
 Spring Creek Campus  
 (972) 881-5894

*Lab Instructor*  
**LINDSAY NICHOLS**  
[lnichols@cccdd.edu](mailto:lnichols@cccdd.edu)  
 Spring Creek Campus  
 (972) 881-5894

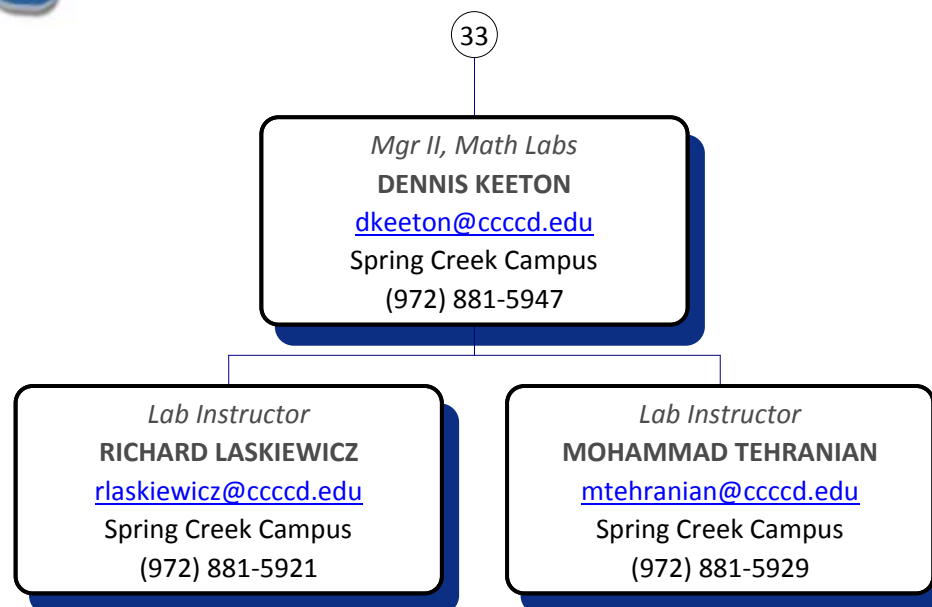
*Lab Instructor*  
**MARK TURNER**  
[mturner@cccdd.edu](mailto:mturner@cccdd.edu)  
 Spring Creek Campus  
 (972) 881-5894

*Lab Instructor*  
**MARK GARCIA**  
[mvgarcia@cccdd.edu](mailto:mvgarcia@cccdd.edu)  
 Spring Creek Campus  
 (972) 881-5894

*Lab Asst*  
**SHEA BARNES**  
[sbarnes@cccdd.edu](mailto:sbarnes@cccdd.edu)  
 Spring Creek Campus  
 (972) 548-6792

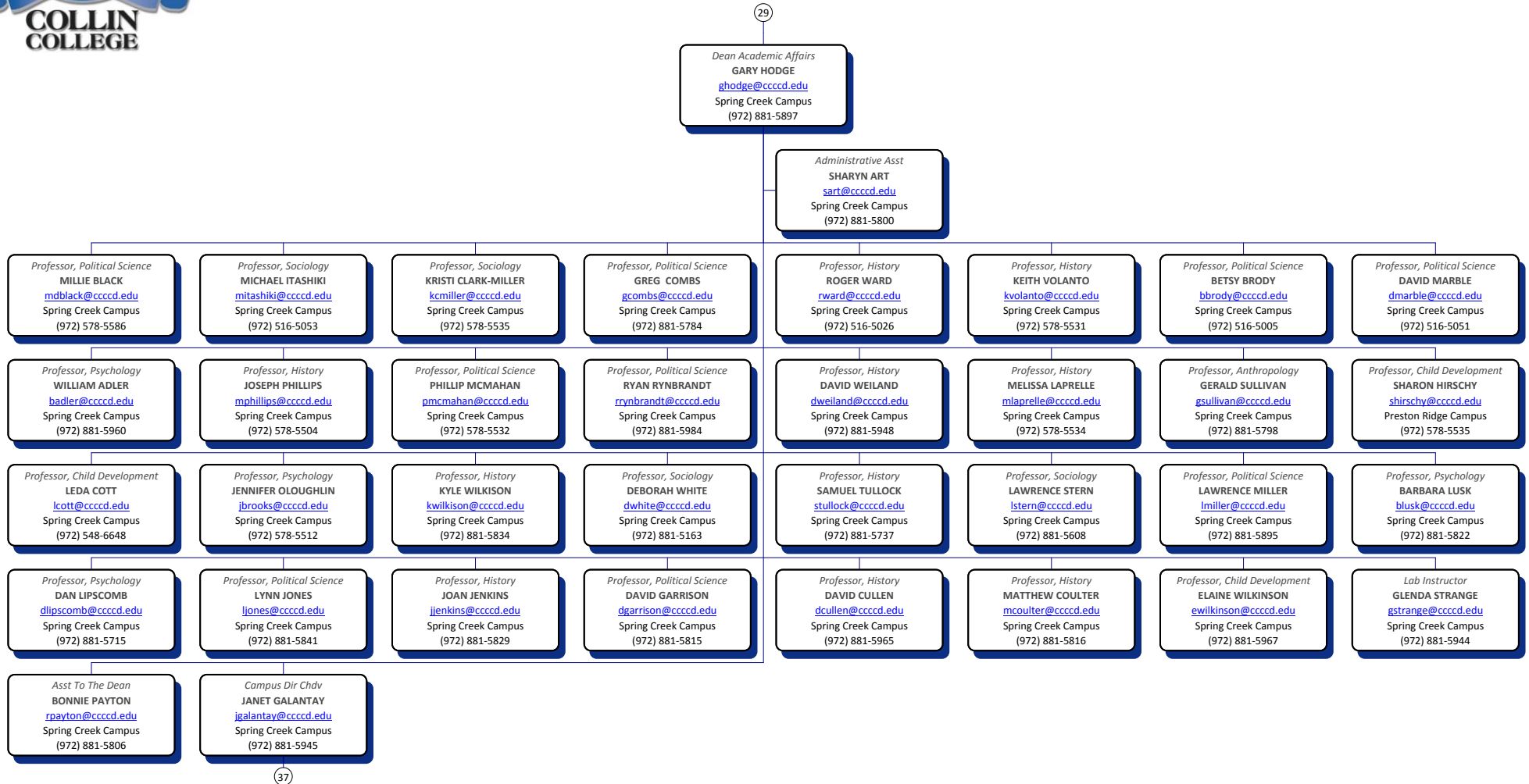


# MATH & NATURAL SCIENCES



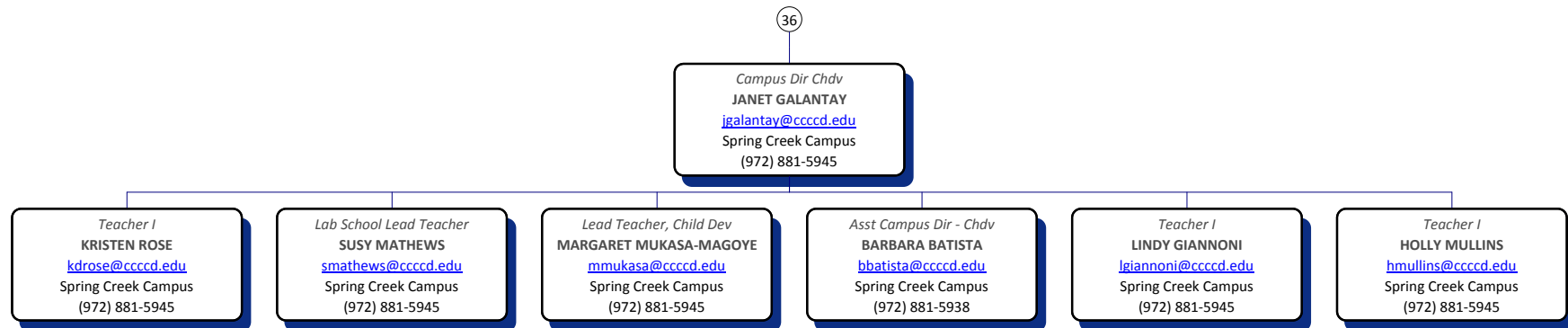


# SOCIAL-BEHAVIORAL SCI





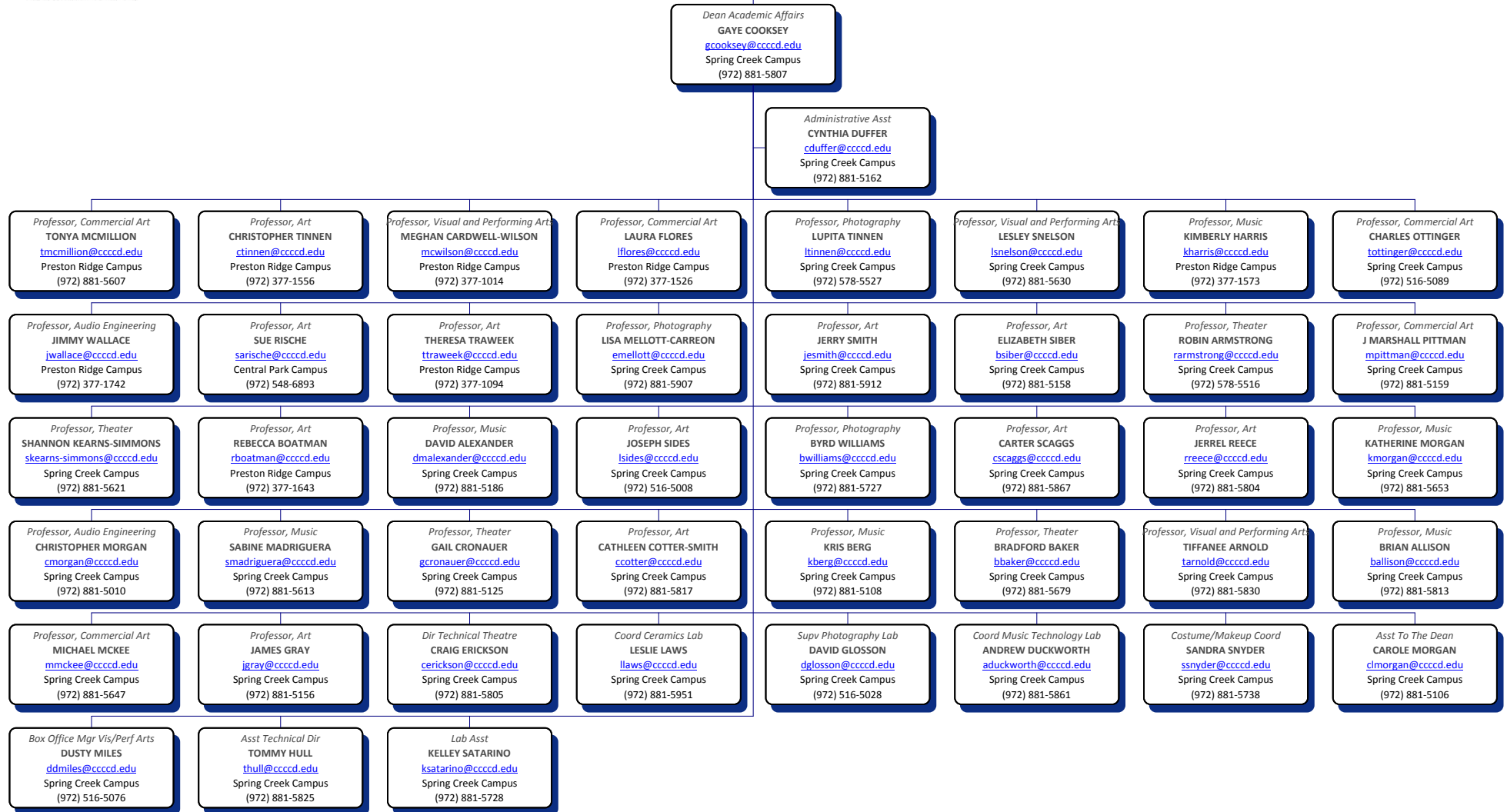
## CHILD DEVELOPMENT CENTER





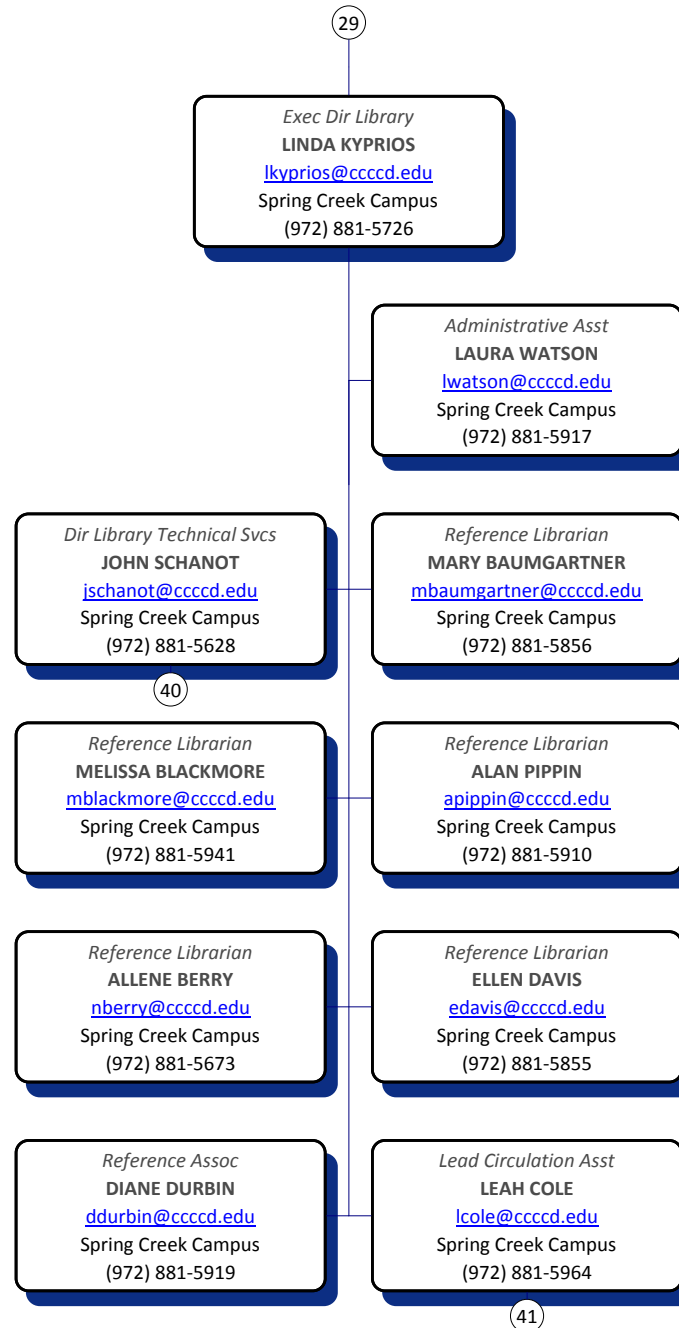
## FINE ARTS

29





# LIBRARY





# LIBRARY

39

*Dir Library Technical Svcs*  
**JOHN SCHANOT**  
[jschanot@cccd.edu](mailto:jschanot@cccd.edu)  
Spring Creek Campus  
(972) 881-5628

*Lib Tech Svcs Asst*  
**SHEILA SWENHOLT**  
[sswenholt@cccd.edu](mailto:sswenholt@cccd.edu)  
Spring Creek Campus  
(972) 881-5869

*Lib Tech Svcs Asst*  
**SHANNON COOK**  
[scook@cccd.edu](mailto:scook@cccd.edu)  
Spring Creek Campus  
(972) 881-5663

*Lib Tech Svcs Asst*  
**PENELOPE THROOP**  
[pthroop@cccd.edu](mailto:pthroop@cccd.edu)  
Spring Creek Campus  
(972) 578-5529

*Lib Tech Svcs Asst*  
**SANDRA MARTON**  
[smarton@cccd.edu](mailto:smarton@cccd.edu)  
Spring Creek Campus  
(972) 881-5931

*Lib Tech Svcs Asst*  
**JEAN SCHAEFER**  
[jschaefer@cccd.edu](mailto:jschaefer@cccd.edu)  
Spring Creek Campus  
(972) 881-5863



# LIBRARY

39

*Lead Circulation Asst*  
**LEAH COLE**  
[lcoble@cccdd.edu](mailto:lcoble@cccdd.edu)  
Spring Creek Campus  
(972) 881-5964

*Circulation Asst*  
**CLAIRE SHIPMAN**  
[cshipman@cccdd.edu](mailto:cshipman@cccdd.edu)  
Spring Creek Campus  
(972) 881-5860

*Circulation Asst*  
**APRIL PEREZ**  
[aperez@cccdd.edu](mailto:aperez@cccdd.edu)  
Spring Creek Campus  
(972) 881-5860

*Circulation Asst*  
**APARNA MASINA**  
[amasina@cccdd.edu](mailto:amasina@cccdd.edu)  
Spring Creek Campus  
(972) 881-5890



# PRESIDENTS OFFICE



# DEAN OF STUDENTS



42

*Dean of Students*  
**TERRENCE BRENNAN**  
[tbrennan@cccd.edu](mailto:tbrennan@cccd.edu)  
Spring Creek Campus  
(972) 881-5734

*Assoc Dean Of Students*  
**AMY THROOP**  
[athroop@cccd.edu](mailto:athroop@cccd.edu)  
Spring Creek Campus  
(972) 881-5667

*Assoc Dean Of Students*  
**CHERI JACK**  
[cjack@cccd.edu](mailto:cjack@cccd.edu)  
Central Park Campus  
(972) 548-6771

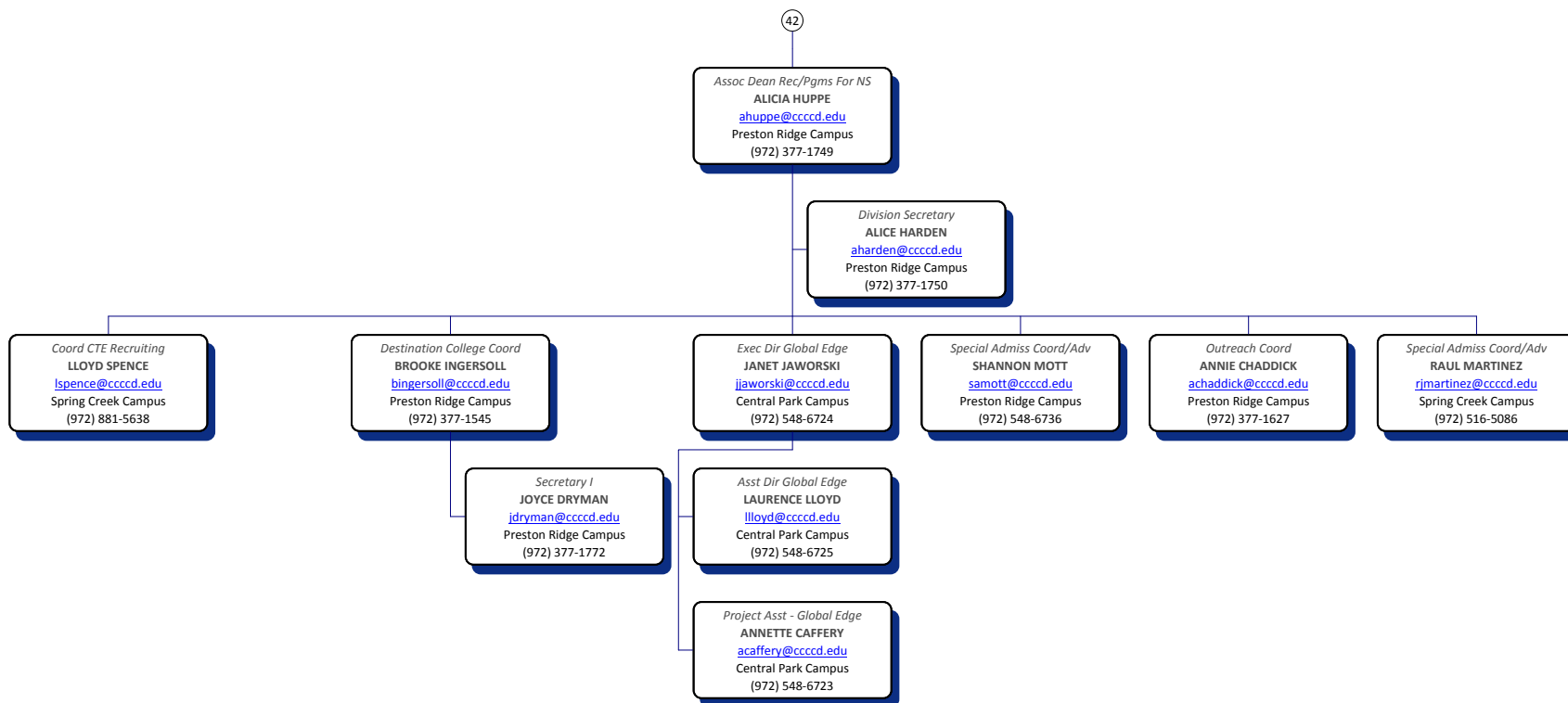
*Assoc Dean Of Students*  
**DOUG WILLIS**  
[dwillis@cccd.edu](mailto:dwillis@cccd.edu)  
Preston Ridge Campus  
(972) 377-1793

*Asst To The Dean*  
**KARLA TOMBAUGH**  
[ktombaugh@cccd.edu](mailto:ktombaugh@cccd.edu)  
Spring Creek Campus  
(972) 881-5604

*Student Dev Spec*  
**MARY ELDRIDGE**  
[meldridge@cccd.edu](mailto:meldridge@cccd.edu)  
Preston Ridge Campus  
(972) 377-1595

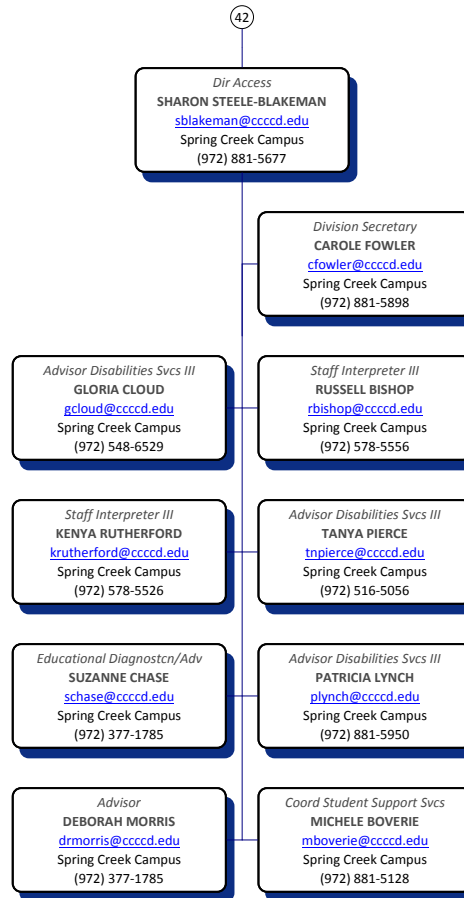


## STUDENT DEVELOPMENT



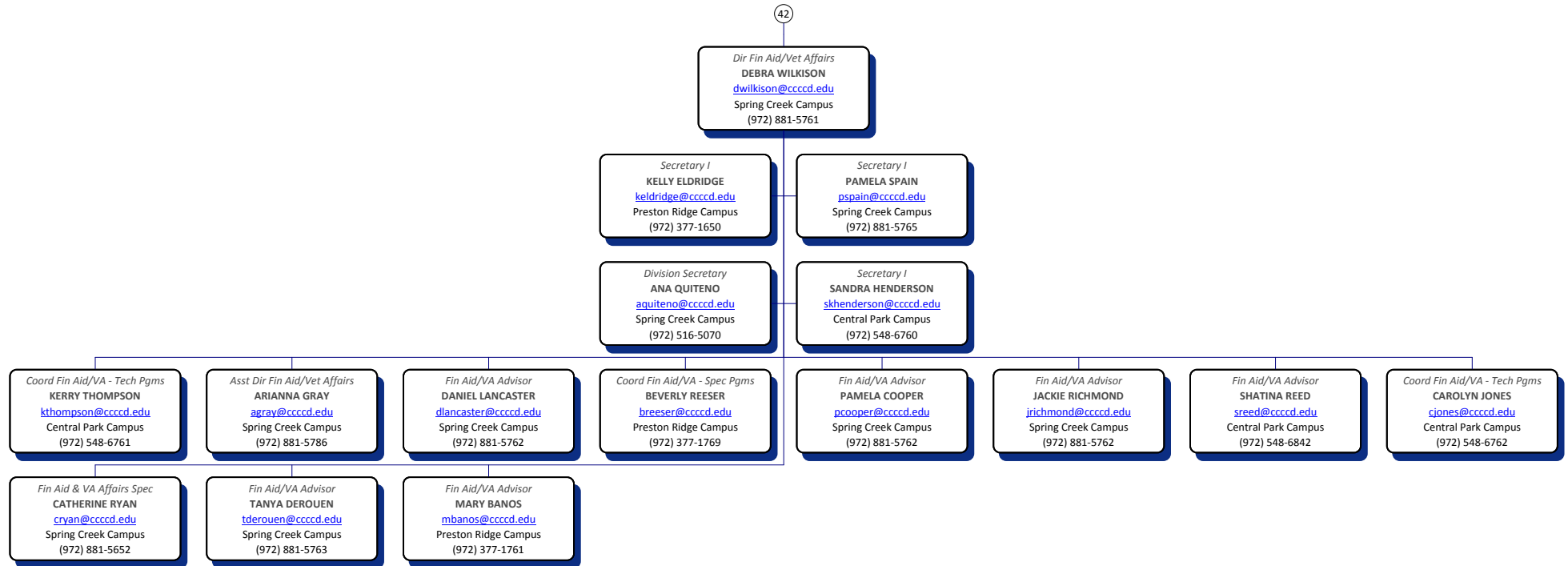


## DEAN OF STUDENTS



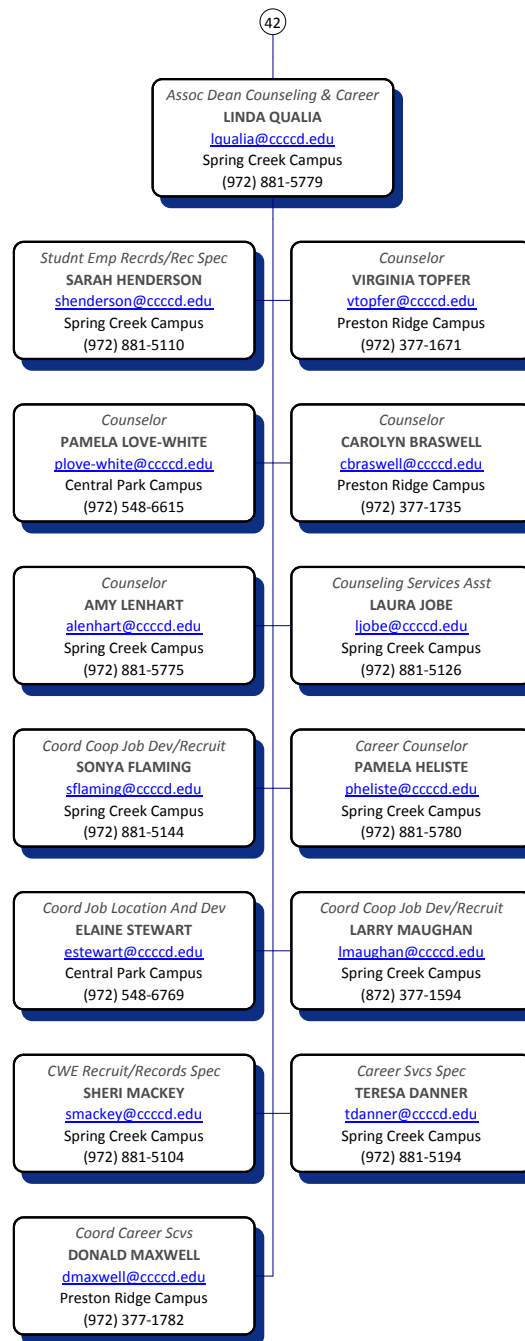


## FINANCIAL AID



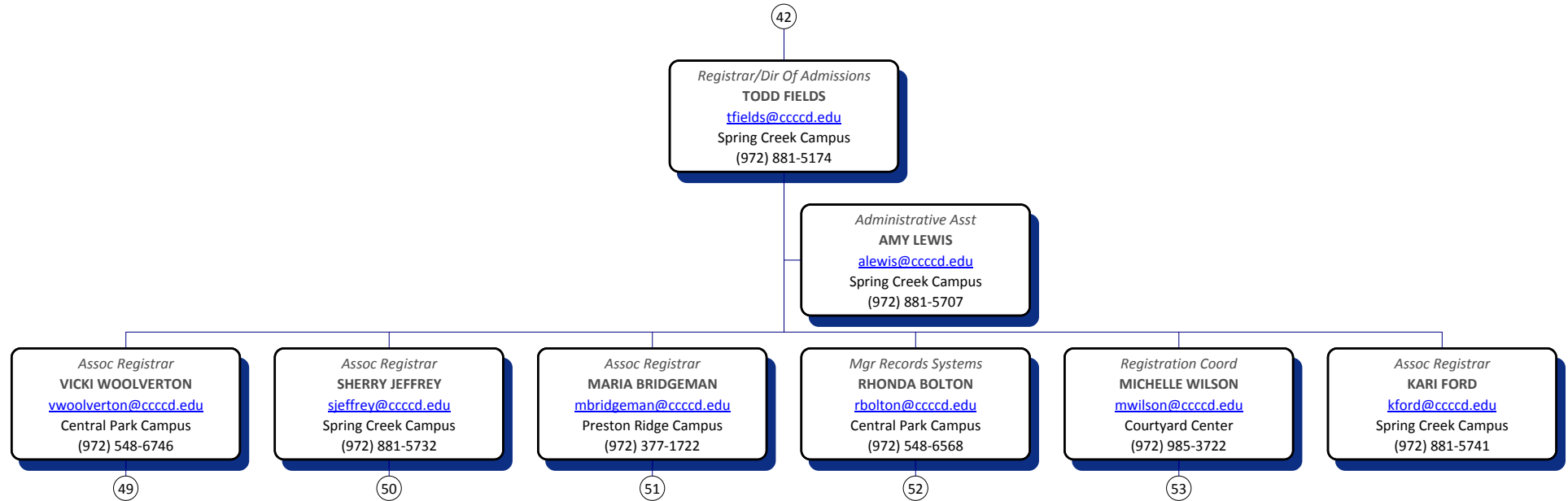


# COUNSELING & CAREER SVCS





## ADMISSIONS & RECORDS



# ADMISSIONS & RECORDS



48

*Assoc Registrar***VICKI WOOLVERTON**[vwoolverton@ccc.edu](mailto:vwoolverton@ccc.edu)

Central Park Campus

(972) 548-6746

*Admissions/Records Asst***CATHY RANGEL**[crangel@ccc.edu](mailto:crangel@ccc.edu)

Central Park Campus

(972) 548-6710

*Data Mgt Spec***RHONDA THOMAS**[rthomas@ccc.edu](mailto:rthomas@ccc.edu)

Central Park Campus

(972) 548-6743

*Admissions/Records Asst***SELENA LUJAN**[slujan@ccc.edu](mailto:slujan@ccc.edu)

Central Park Campus

(972) 548-6740

*Admissions/Records Asst***CAROLYN WILLIAMSON**[cwilliamson@ccc.edu](mailto:cwilliamson@ccc.edu)

Central Park Campus

(972) 548-6745

*Admissions/Records Asst***CINDA JOHNSON**[cjohnson@ccc.edu](mailto:cjohnson@ccc.edu)

Central Park Campus

(972) 548-6744

*Admissions/Records Asst***TERESA HANNA**[thanna@ccc.edu](mailto:thanna@ccc.edu)

Central Park Campus

(972) 548-6706

# ADMISSIONS & RECORDS



48

*Assoc Registrar*

**SHERRY JEFFREY**

[sjeffrey@cccdd.edu](mailto:sjeffrey@cccdd.edu)

Spring Creek Campus

(972) 881-5732

*Admissions/Records Asst*

**MAE NICHOLLS**

[mnicholls@cccdd.edu](mailto:mnicholls@cccdd.edu)

Spring Creek Campus

(972) 881-5710

*Admissions/Records Asst*

**TOM MOKAKE**

[tmokake@cccdd.edu](mailto:tmokake@cccdd.edu)

Spring Creek Campus

(972) 881-5744

*Admissions Assoc*

**LILLIAN MEASON**

[lmeason@cccdd.edu](mailto:lmeason@cccdd.edu)

Spring Creek Campus

(972) 881-5745

*Advisor*

**ERIN DARITY**

[edarity@cccdd.edu](mailto:edarity@cccdd.edu)

Central Park Campus

(972) 548-6778

*Admissions/Records Asst*

**DIANA HICKMAN-PLATT**

[dplatt@cccdd.edu](mailto:dplatt@cccdd.edu)

Spring Creek Campus

(972) 881-5740

# ADMISSIONS & RECORDS



48

*Assoc Registrar***MARIA BRIDGEMAN**[mbridgeman@cccd.edu](mailto:mbridgeman@cccd.edu)

Preston Ridge Campus

(972) 377-1722

*Admissions/Records Asst***NADINE HARTLEY**[nhartley@cccd.edu](mailto:nhartley@cccd.edu)

Preston Ridge Campus

(972) 377-1645

*Admissions/Records Asst***SUSAN CRUMPLER**[scrumpler@cccd.edu](mailto:scrumpler@cccd.edu)

Preston Ridge Campus

(972) 377-1710

*Degree Plan/Grad Assoc***ALEX ROMANO**[aromano@cccd.edu](mailto:aromano@cccd.edu)

Preston Ridge Campus

(972) 377-1747

*Degree Plan/Grad Assoc***CARELYN MITCHELL**[cmitchell@cccd.edu](mailto:cmitchell@cccd.edu)

Preston Ridge Campus

(972) 377-1647

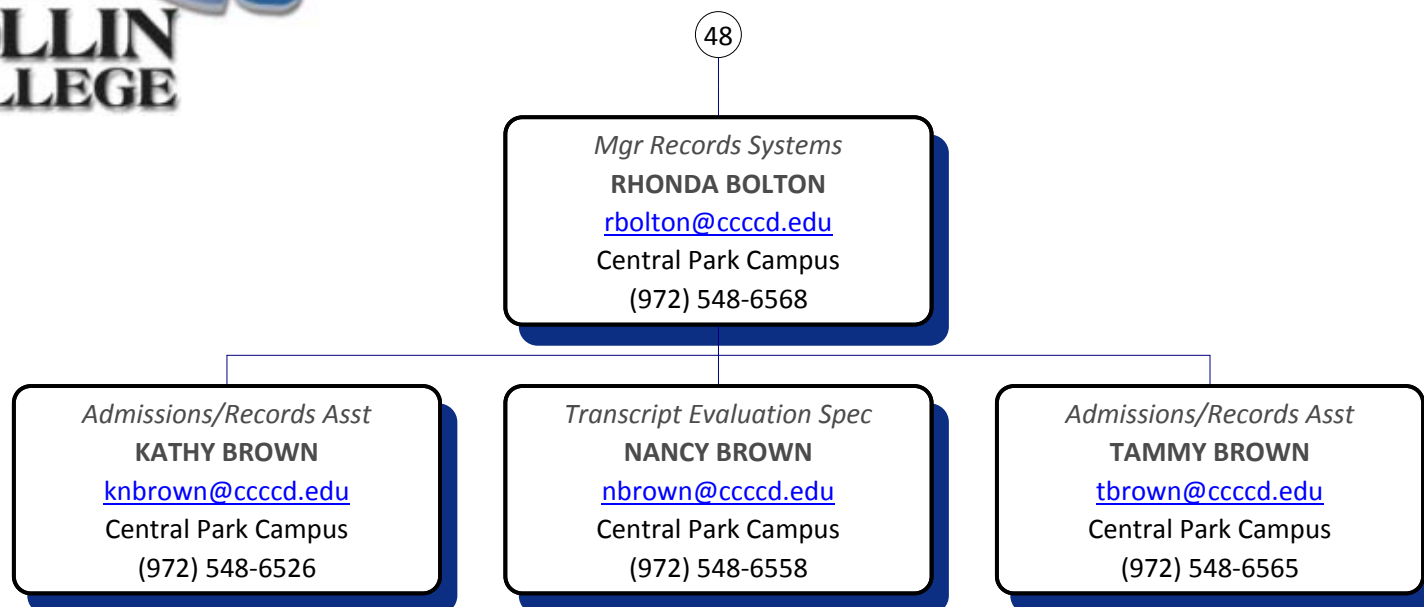
*Admissions/Records Asst***NANETTE GASKEY**[ngaskey@cccd.edu](mailto:ngaskey@cccd.edu)

Preston Ridge Campus

(972) 377-1744



# ADMISSIONS & RECORDS





# ADMISSIONS & RECORDS

48

*Registration Coord*

**MICHELLE WILSON**

[mwilson@cccd.edu](mailto:mwilson@cccd.edu)

Courtyard Center

(972) 985-3722

*Admissions/Records Asst*

**JAMES TURNER**

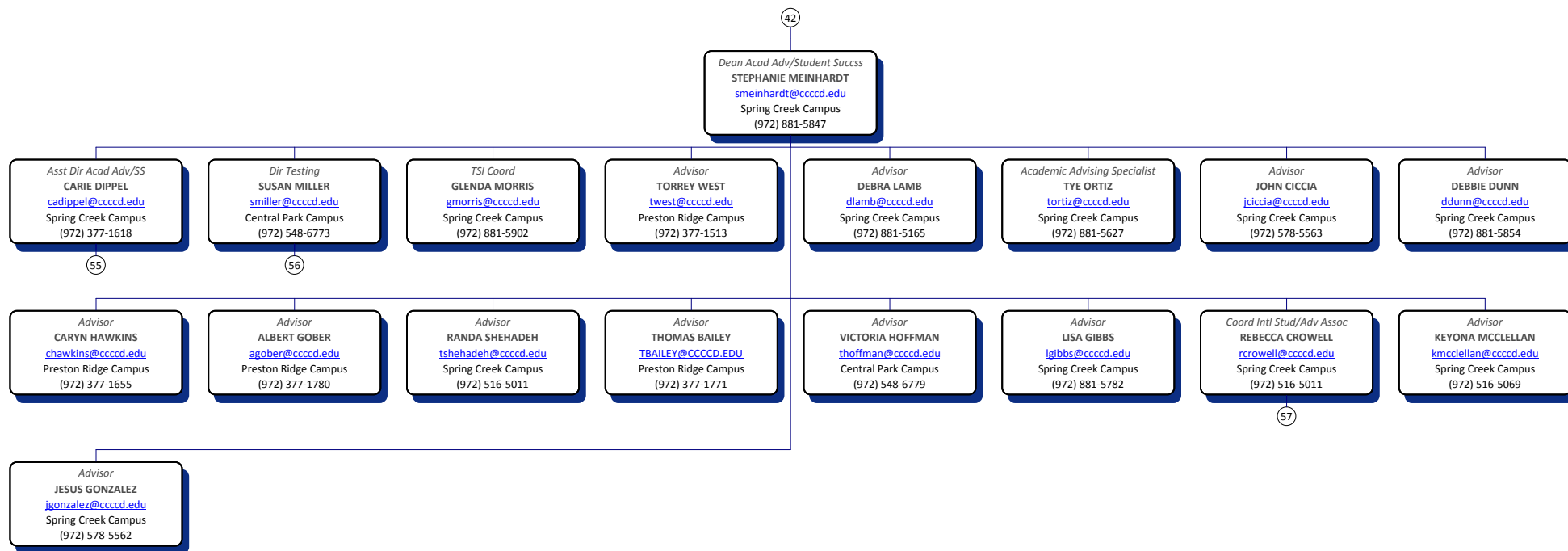
[jturner@cccd.edu](mailto:jturner@cccd.edu)

Courtyard Center

(972) 985-3721



## ACADEMIC ADVISING





# ACADEMIC ADVISING

54

*Asst Dir Acad Adv/SS*

**CARIE DIPPEL**

[cadippel@cccCd.edu](mailto:cadippel@cccCd.edu)

Spring Creek Campus

(972) 377-1618

*Student Dev Spec*

**SHONTEL PEARSON**

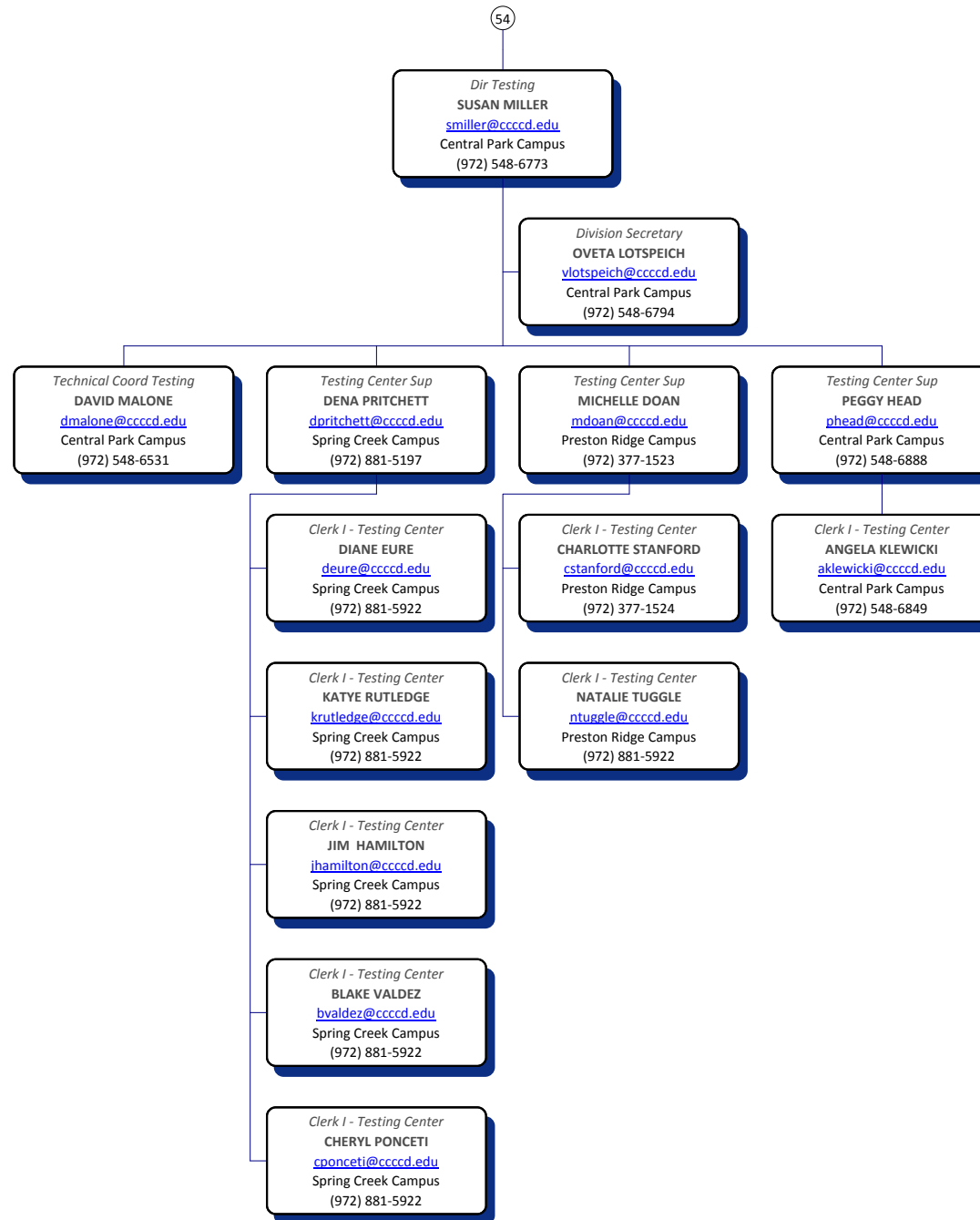
[spearson@cccCd.edu](mailto:spearson@cccCd.edu)

Preston Ridge Campus

(972) 377-1770



# TESTING





# ACADEMIC ADVISING

54

*Coord Intl Stud/Adv Assoc*

**REBECCA CROWELL**

[rcrowell@cccd.edu](mailto:rcrowell@cccd.edu)

Spring Creek Campus

(972) 516-5011

*Intl Student Srvs Asst*

**TANYA SMITH-WHITE**

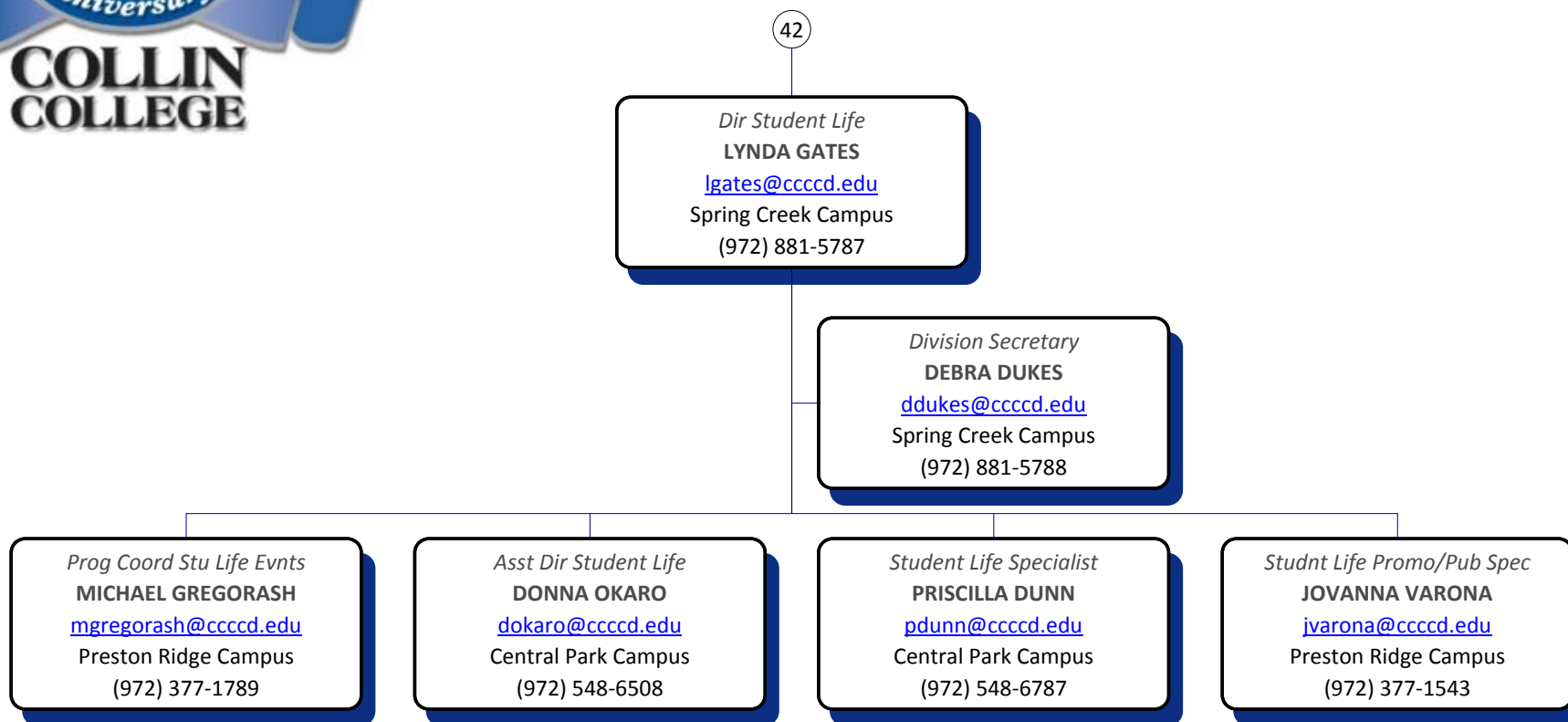
[tcwhite@cccd.edu](mailto:tcwhite@cccd.edu)

Spring Creek Campus

(972) 516-5012

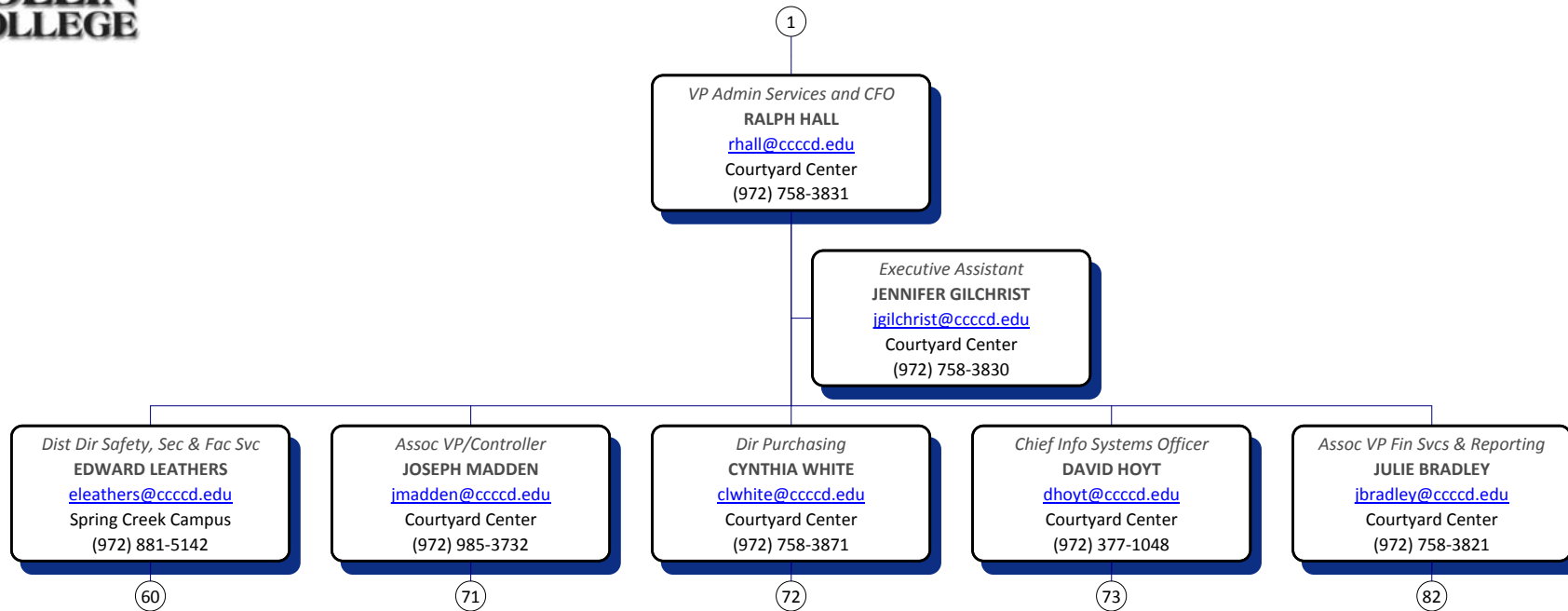


# STUDENT LIFE

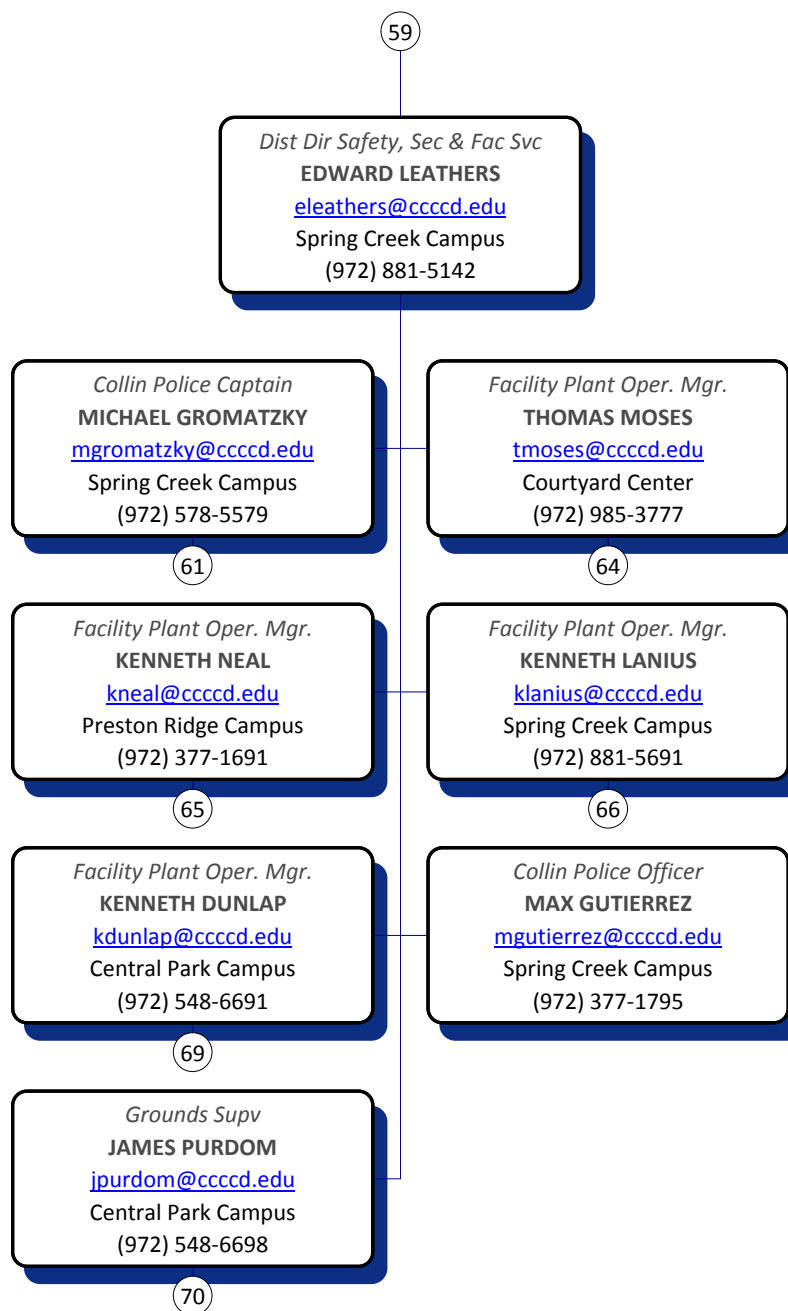




## VP ADMIN SVCS & CFO



# SAFETY SECURITY & FAC SVC



# SAFETY SECURITY & FAC SVC



# SAFETY SECURITY & FAC SVC



61

*Collin Police Sergeant*  
**WILLIAM HOGAN**  
[rhogan@cccdd.edu](mailto:rhogan@cccdd.edu)  
Spring Creek Campus  
(972) 881-5696

*Collin Police Officer*  
**JERRY HAMON**  
[jhamon@cccdd.edu](mailto:jhamon@cccdd.edu)  
Spring Creek Campus  
(972) 881-5795

*Collin Police Officer*  
**BOBBY MCCOY**  
[bmccoy@cccdd.edu](mailto:bmccoy@cccdd.edu)  
Spring Creek Campus  
(972) 881-5696

*Collin Police Officer*  
**SURASAK YAMFANG**  
[syamfang@cccdd.edu](mailto:syamfang@cccdd.edu)  
Spring Creek Campus  
(972) 377-1795

*Collin Police Officer*  
**DONALD MEWBOURN**  
[dmewbourn@cccdd.edu](mailto:dmewbourn@cccdd.edu)  
Spring Creek Campus  
(972) 548-6795

*Collin Police Officer*  
**DAVID BIRDWELL**  
[dbirdwell@cccdd.edu](mailto:dbirdwell@cccdd.edu)  
Spring Creek Campus  
(972) 548-6795

# SAFETY SECURITY & FAC SVC



61

*Collin Police Sergeant*

**CURTIS MARTIN**

[cdmartin@ccc.edu](mailto:cdmartin@ccc.edu)

Spring Creek Campus

(972) 377-1795

*Collin Police Officer*

**WARREN MCNURLEN**

[wmcnurlen@ccc.edu](mailto:wmcnurlen@ccc.edu)

Spring Creek Campus

(972) 881-5795

*Collin Police Officer*

**DANIEL REIGHLEY**

[dreighley@ccc.edu](mailto:dreighley@ccc.edu)

Spring Creek Campus

(972) 881-5795

*Collin Police Officer*

**WILLIAM ROGERS**

[wrogers@ccc.edu](mailto:wrogers@ccc.edu)

Spring Creek Campus

(972) 881-5795

*Collin Police Officer*

**THOMAS MILLER**

[tmiller@ccc.edu](mailto:tmiller@ccc.edu)

Spring Creek Campus

(972) 881-5795

*Collin Police Officer*

**MIKE HENDERSON**

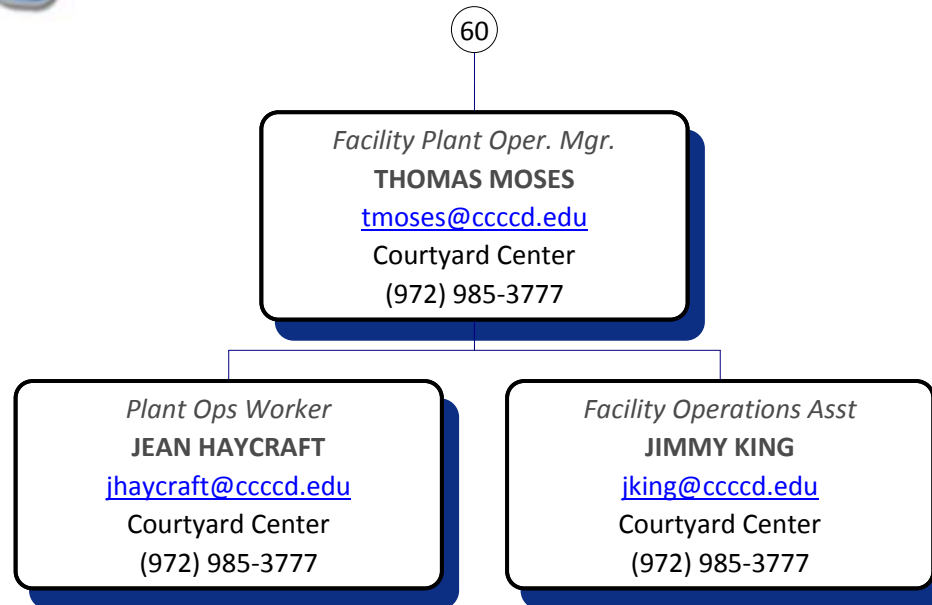
[mlhenderson@ccc.edu](mailto:mlhenderson@ccc.edu)

Spring Creek Campus

(972) 578-5579

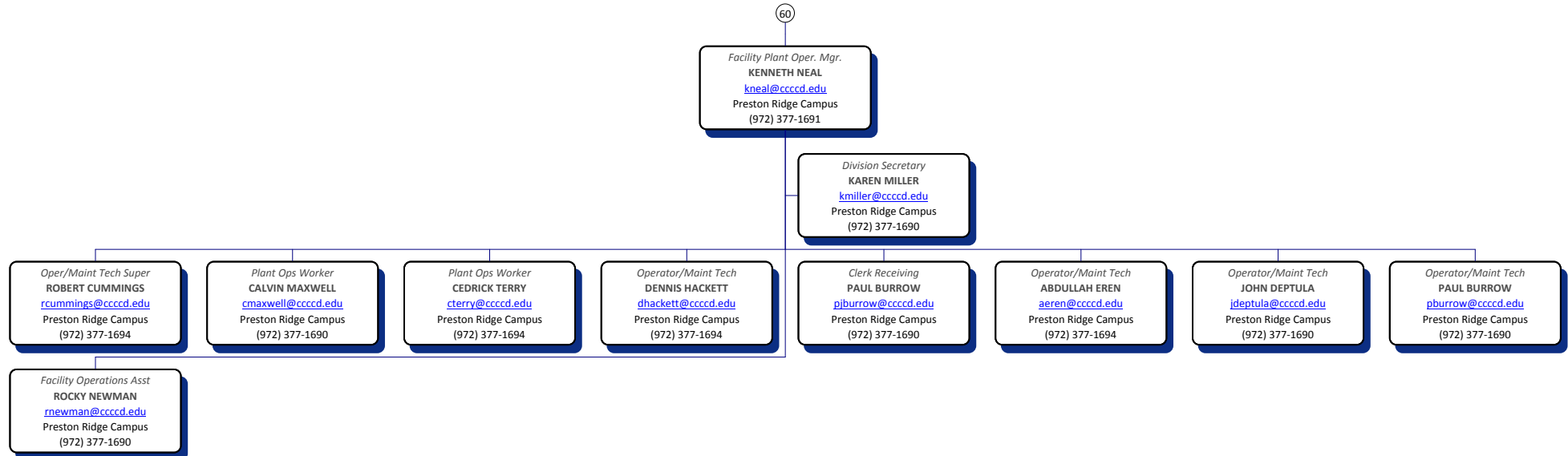


# PLANT OPERATIONS



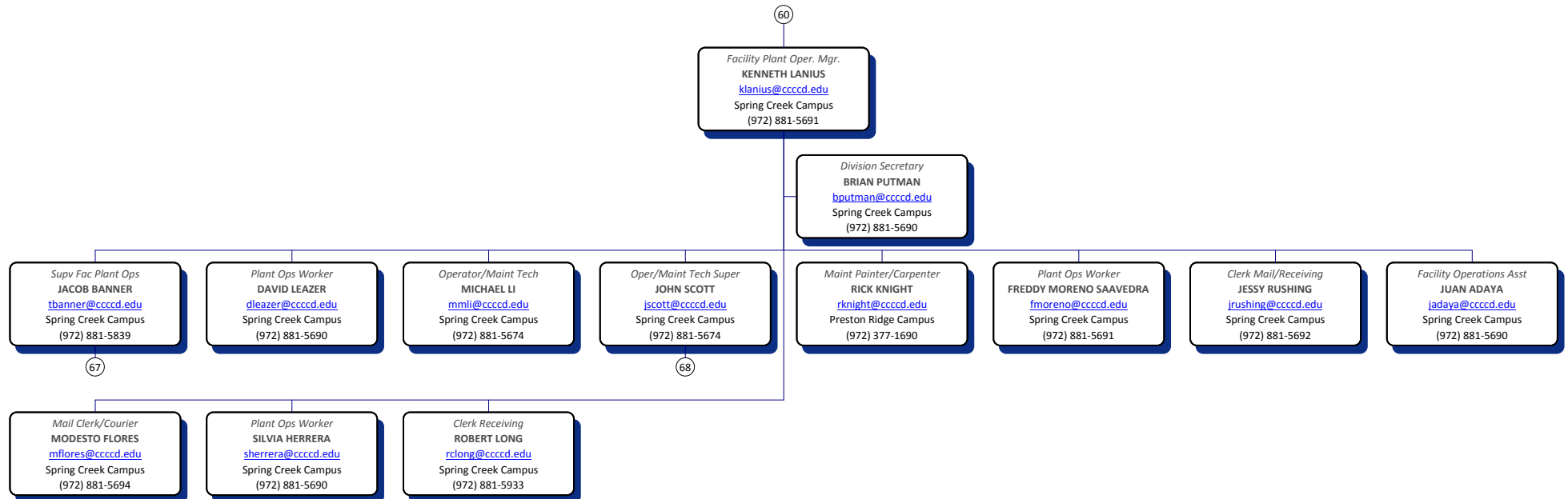


## PLANT OPERATIONS



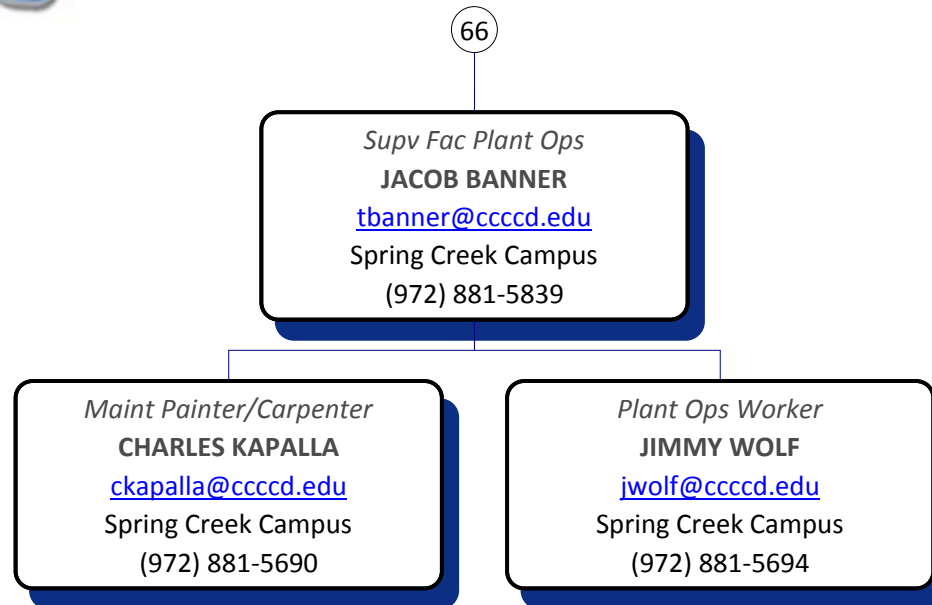


## PLANT OPERATIONS





# PLANT OPERATIONS





# PLANT OPERATIONS

66

*Oper/Maint Tech Super*  
**JOHN SCOTT**  
[jscott@cccdd.edu](mailto:jscott@cccdd.edu)  
Spring Creek Campus  
(972) 881-5674

*Operator/Maint Tech*  
**JERRY STURDEVANT**  
[jsturdevant@cccdd.edu](mailto:jsturdevant@cccdd.edu)  
Spring Creek Campus  
(972) 881-5694

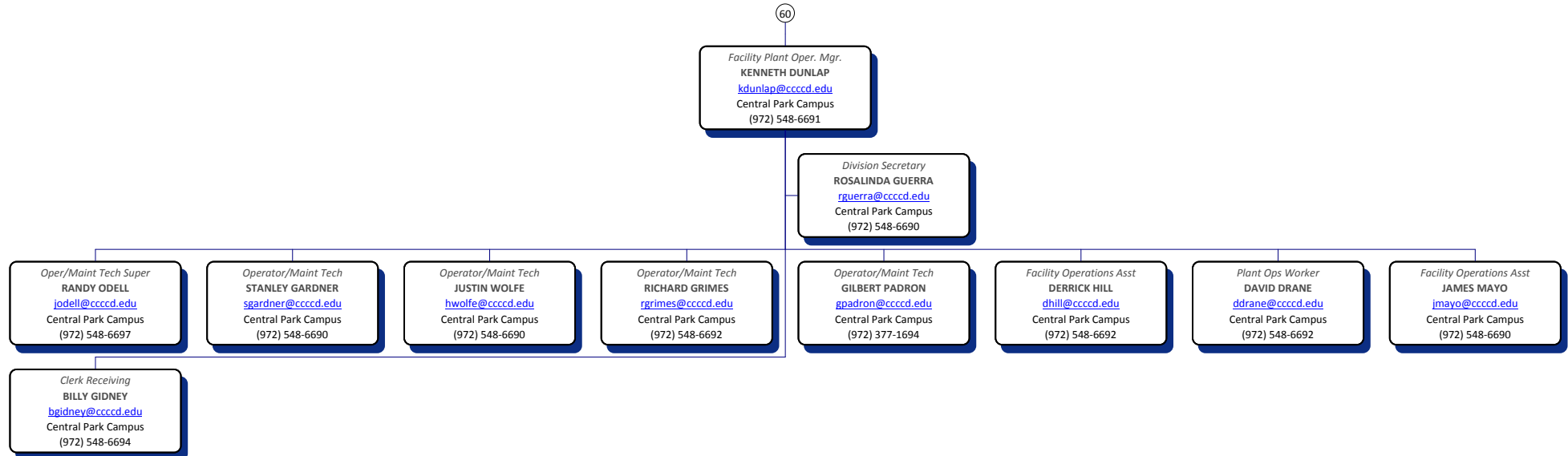
*Operator/Maint Tech*  
**DENNIS GILMORE**  
[dgilmore@cccdd.edu](mailto:dgilmore@cccdd.edu)  
Spring Creek Campus  
(972) 881-5690

*Operator/Maint Tech*  
**THOMAS MARVIN**  
[tmarvin@cccdd.edu](mailto:tmarvin@cccdd.edu)  
Spring Creek Campus  
(972) 881-5694

*Operator/Maint Tech*  
**DINH NGUYEN**  
[dnguyen@cccdd.edu](mailto:dnguyen@cccdd.edu)  
Spring Creek Campus  
(972) 881-5690

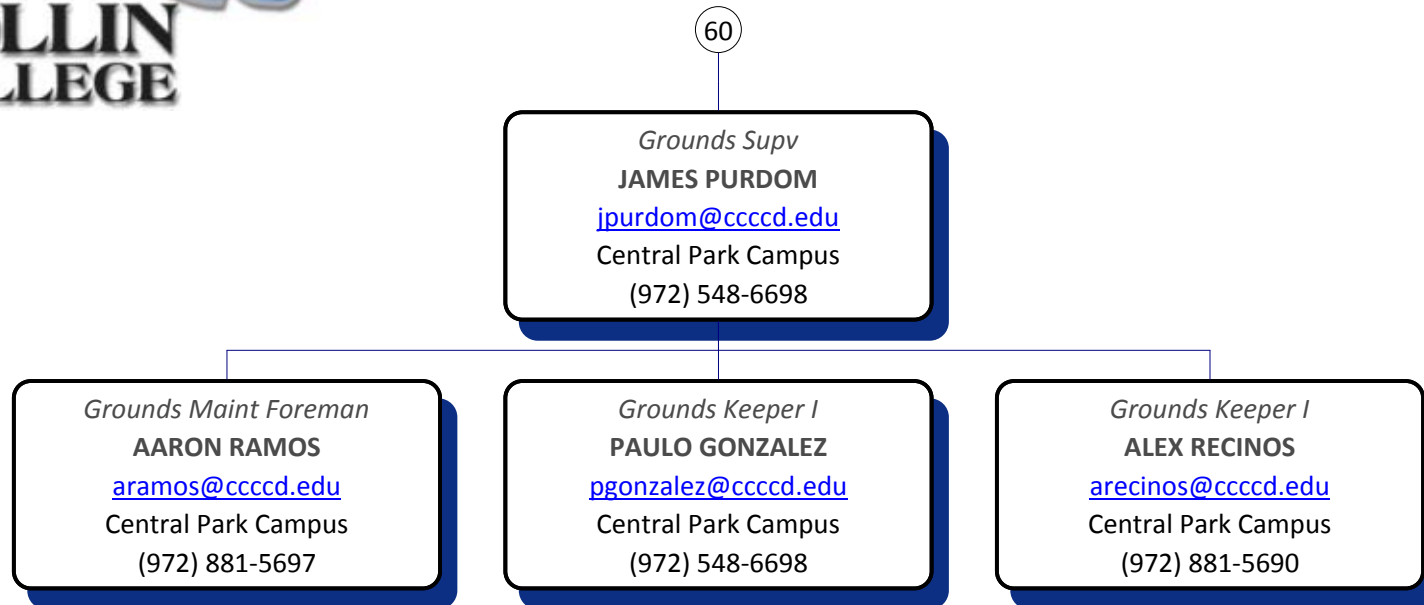


## PLANT OPERATIONS



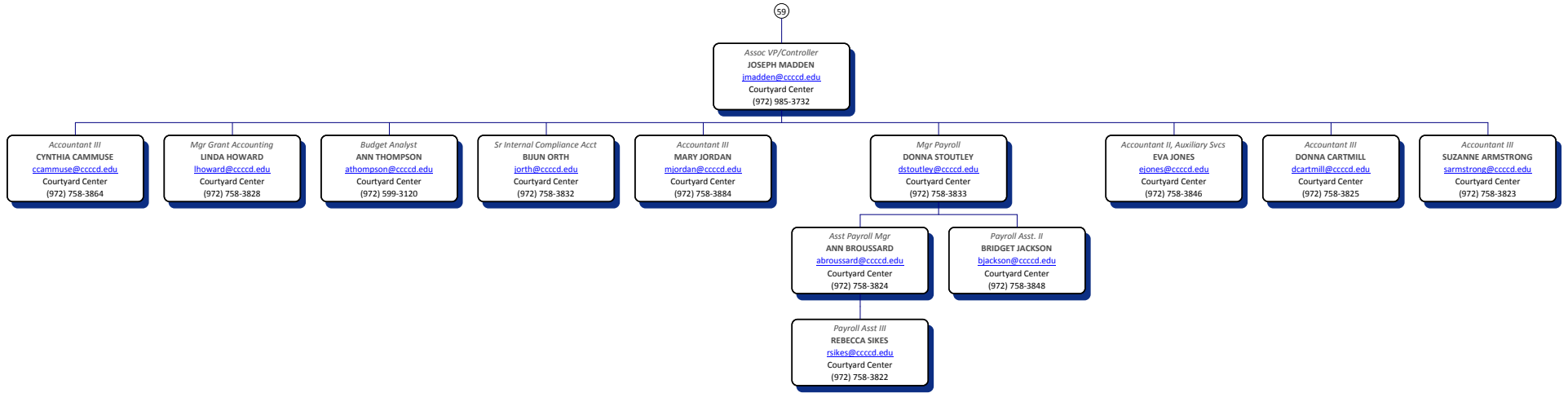


# PLANT OPERATIONS



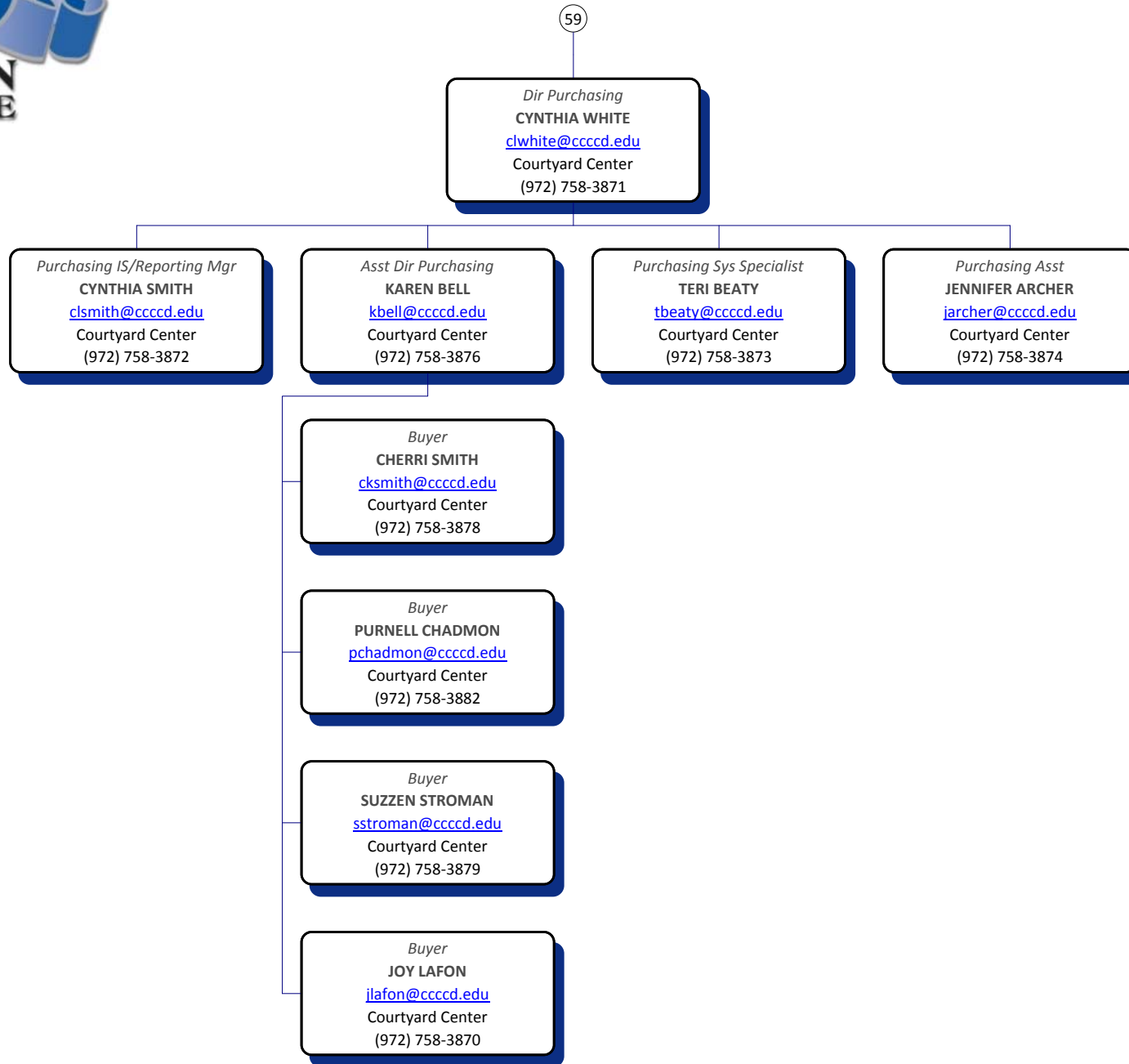


### VP ADMIN SVCS & CFO



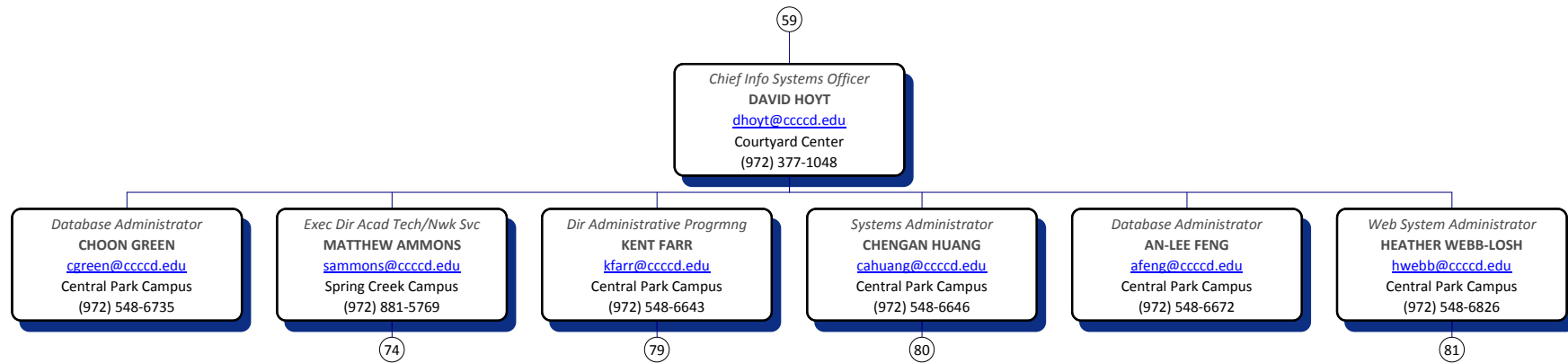


# VP ADMIN SVCS & CFO



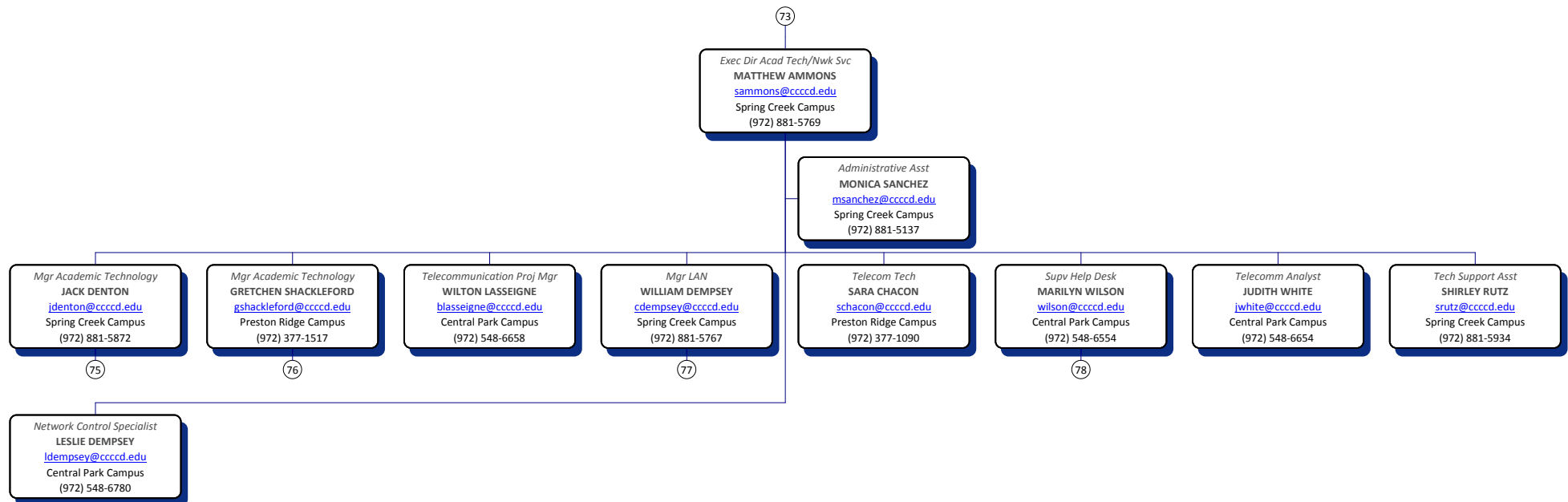


## INFORMATION TECHNOLOGY



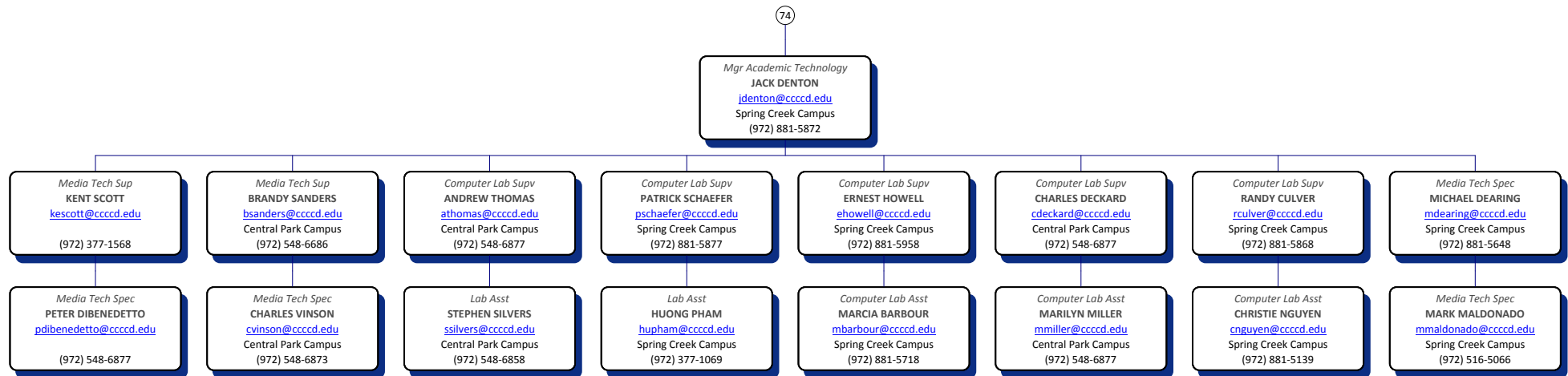


## AC TECH NETWORK SVCS



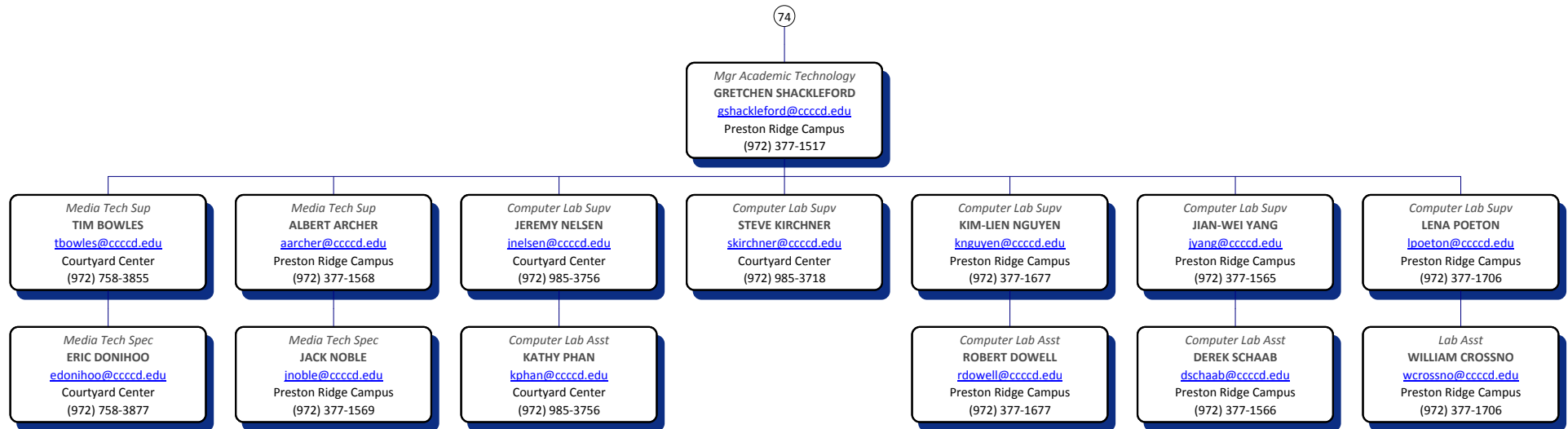


## AC TECH NETWORK SVCS



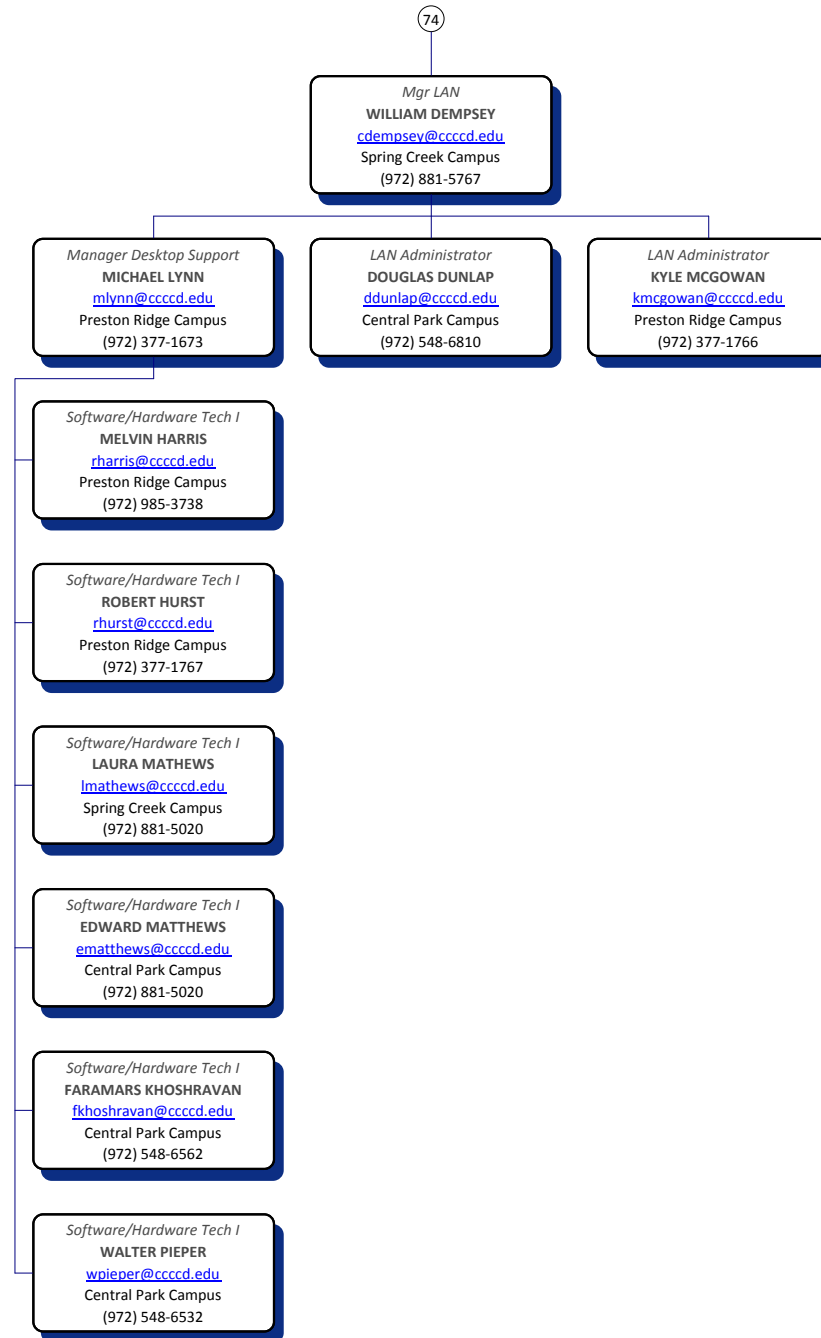


## AC TECH NETWORK SVCS



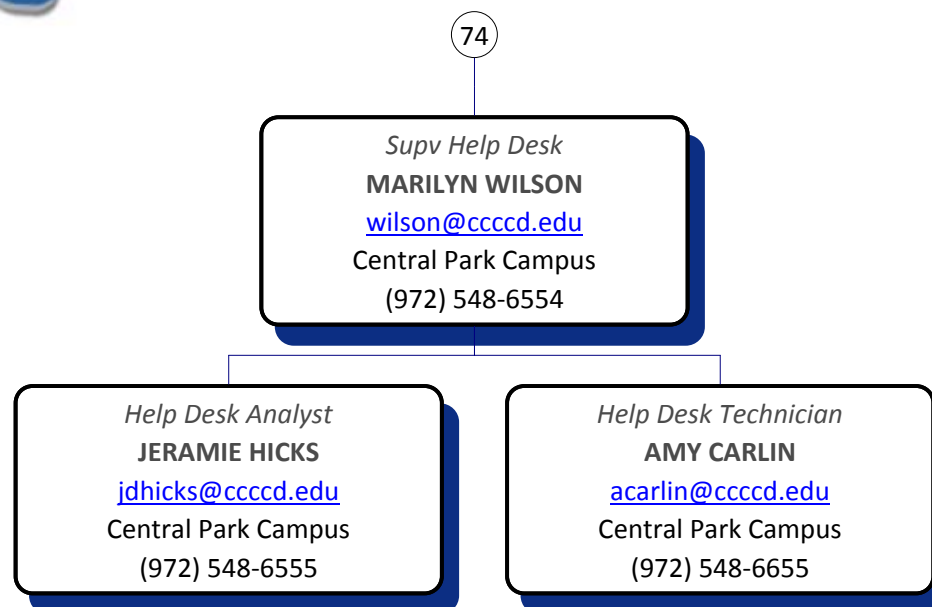


# AC TECH NETWORK SVCS





# AC TECH NETWORK SVCS



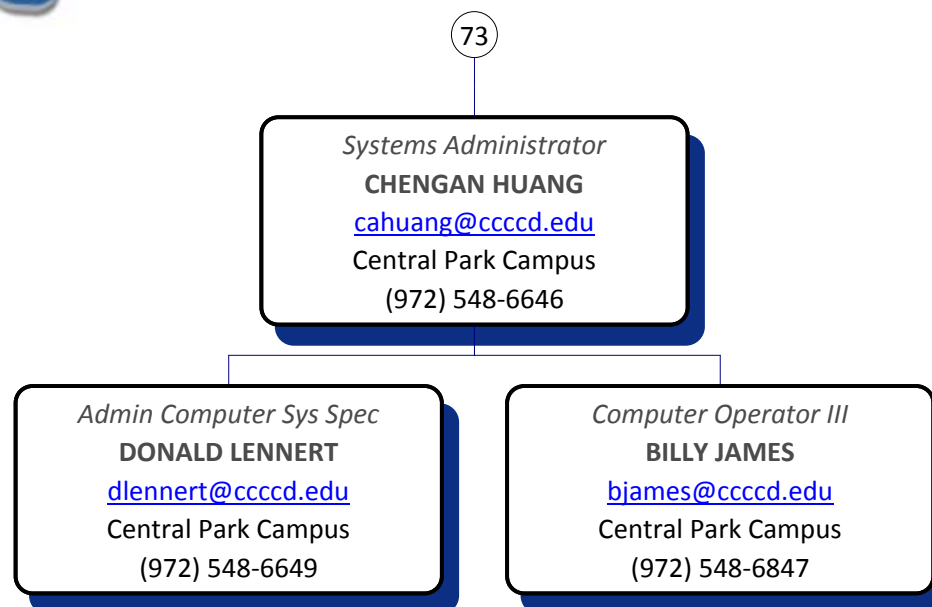


## INFORMATION TECHNOLOGY





# INFORMATION TECHNOLOGY





# INFORMATION TECHNOLOGY

73

*Web System Administrator*

**HEATHER WEBB-LOSH**

[hwebb@ccc.edu](mailto:hwebb@ccc.edu)

Central Park Campus

(972) 548-6826

*Internet Systems Specialist*

**JONATHAN STOBER**

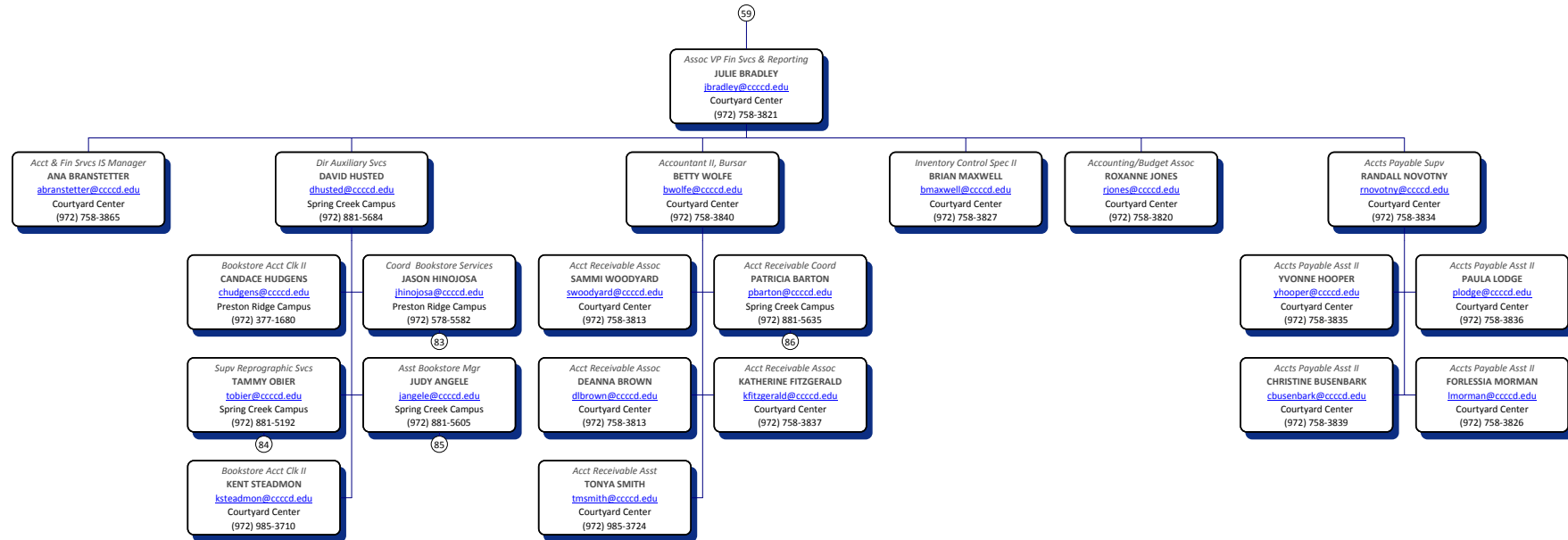
[jstober@ccc.edu](mailto:jstober@ccc.edu)

Central Park Campus

(972) 548-6749



## VP ADMIN SVCS & CFO





# BUSINESS OFFICE





# BUSINESS OFFICE

82

*Supv Reprographic Svcs*

**TAMMY OBIER**

[tobier@cccd.edu](mailto:tobier@cccd.edu)

Spring Creek Campus

(972) 881-5192

*Reprographics Asst*

**KERRY JEFFREY**

[kjeffrey@cccd.edu](mailto:kjeffrey@cccd.edu)

Spring Creek Campus

(972) 881-5708



# BUSINESS OFFICE

82

*Asst Bookstore Mgr*  
**JUDY ANGELE**  
[jangele@cccd.edu](mailto:jangele@cccd.edu)  
Spring Creek Campus  
(972) 881-5605

*Textbook Coordination Asst*  
**CHRISTEN NIX**  
[cnix@cccd.edu](mailto:cnix@cccd.edu)  
Spring Creek Campus  
(972) 881-5682

*Bookstore Acct Clk I*  
**REBA BARTEL**  
[rbartel@cccd.edu](mailto:rbartel@cccd.edu)  
Spring Creek Campus  
(972) 881-5685

*Accounting Clerk, Shp/Recv*  
**MICHAEL MARSHALL**  
[mmarshall@cccd.edu](mailto:mmarshall@cccd.edu)  
Spring Creek Campus  
(972) 881-5972

*Bookstore Acct Clk I*  
**IRENE LUNA**  
[iluna@cccd.edu](mailto:iluna@cccd.edu)  
Spring Creek Campus  
(972) 881-5997

# BUSINESS OFFICE



82

*Acct Receivable Coord*

**PATRICIA BARTON**

[pbarton@cccdd.edu](mailto:pbarton@cccdd.edu)

Spring Creek Campus

(972) 881-5635

*Acct Receivable Assoc*

**BARBARA WILSON**

[brwilson@cccdd.edu](mailto:brwilson@cccdd.edu)

Spring Creek Campus

(972) 881-5634

*Acct Receivable Assoc*

**KAREN CROUSSORE**

[kcroussore@cccdd.edu](mailto:kcroussore@cccdd.edu)

Preston Ridge Campus

(972) 377-1638

*Acct Receivable Assoc*

**DEBORAH LIVINGSTON**

[dlivingston@cccdd.edu](mailto:dlivingston@cccdd.edu)

Spring Creek Campus

(972) 881-5635

*Acct Receivable Assoc*

**JONATHAN MCANALLY**

[jmcanally@cccdd.edu](mailto:jmcanally@cccdd.edu)

Central Park Campus

(972) 548-6616

*Acct Receivable Assoc*

**DANETTE COOPER**

[dcooper@cccdd.edu](mailto:dcooper@cccdd.edu)

Central Park Campus

(972) 548-6653

*Acct Receivable Assoc*

**PAMELA FAIR**

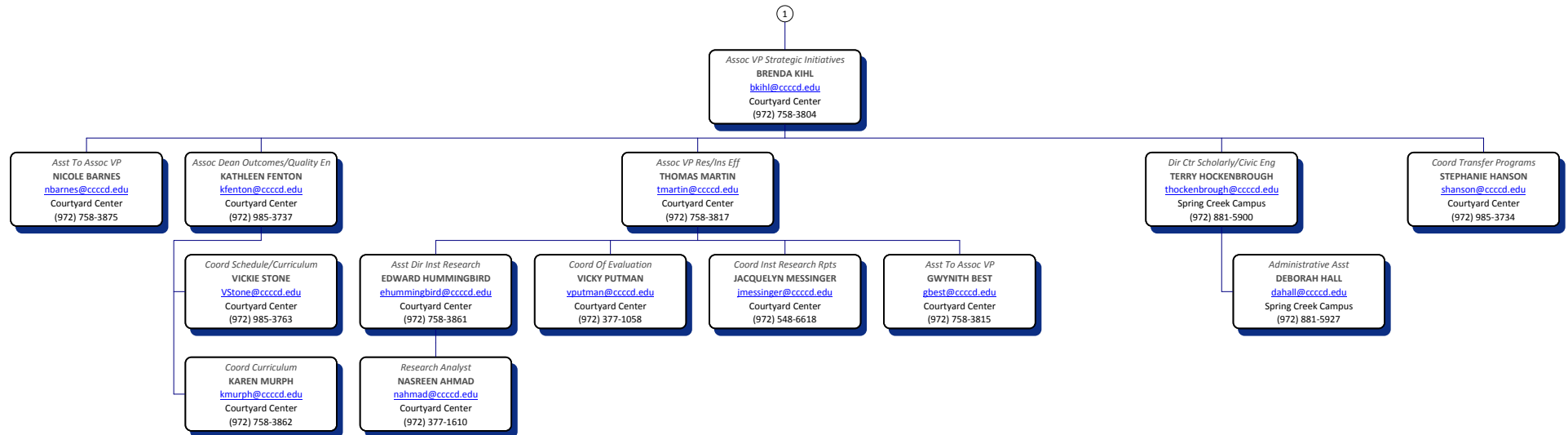
[pfair@cccdd.edu](mailto:pfair@cccdd.edu)

Preston Ridge Campus

(972) 377-1636

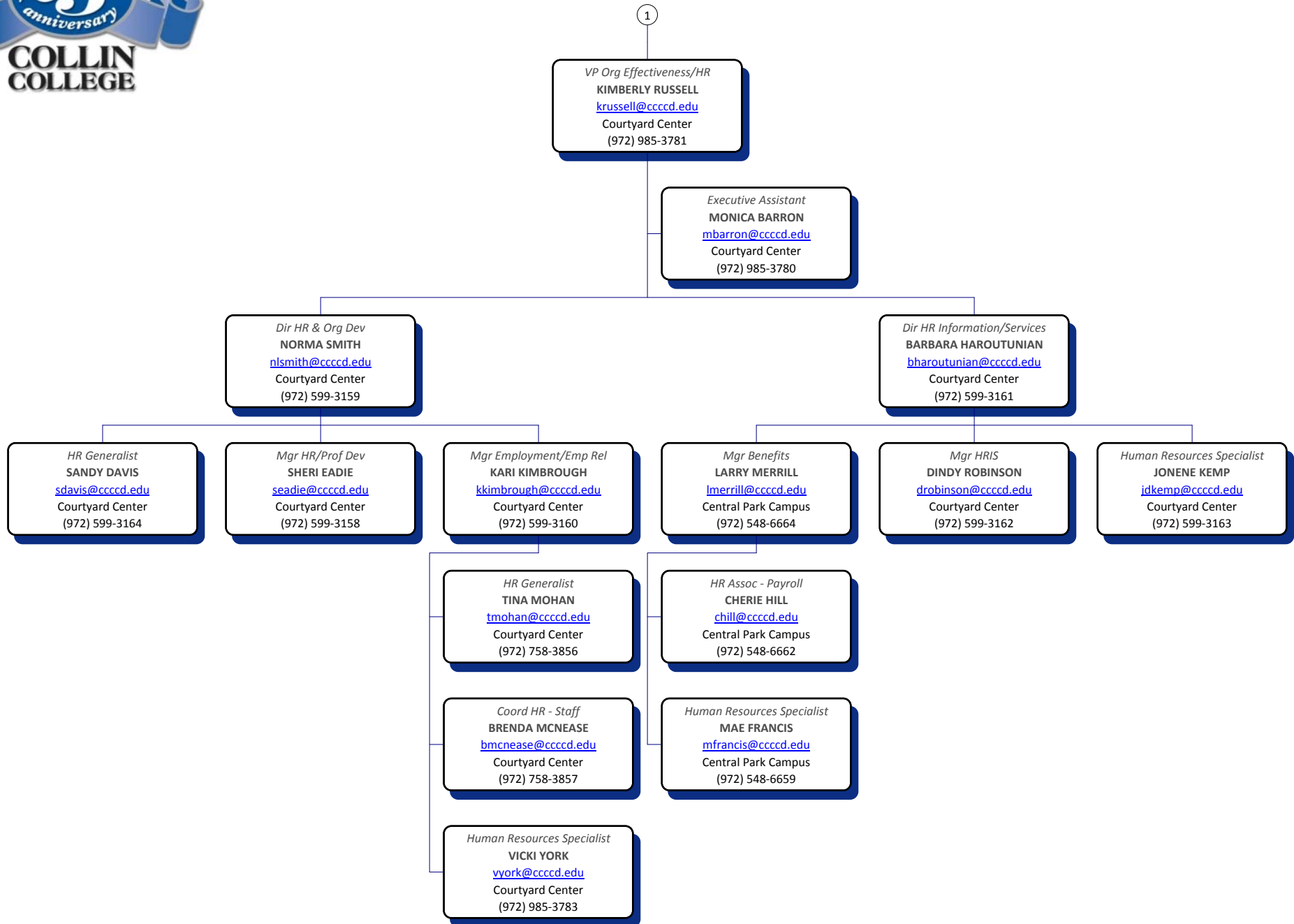


## PRESIDENTS OFFICE





# HUMAN RESOURCES





# PUBLIC RELATIONS

